

## CONTENTS

Safety information	2	Before first use	12
Safety Instructions	3	Daily use	12
Product description	5	Hints and tips	15
Installation	6	Care and cleaning	17
Control panel	8	Troubleshooting	19
Options	9	Technical Data	22
Settings	10	Environmental concerns	22
Programme Chart	10		

Subject to change without notice.

## SAFETY INFORMATION

Please be sure to operate the appliance in accordance with the supplied instructions otherwise safety incidents may occur. Before the installation and use of the appliance, carefully read the supplied instructions. The manufacturer is not responsible for any injuries or damage that are the result of incorrect installation or usage. Always keep the instructions in a safe and accessible location for future reference.

### **Juveniles and vulnerable people safety**

- The juveniles aged under 8 years shall not use this appliance. This appliance can be used by juveniles aged from 8 years and above and persons with reduced physical, sensory or mental capabilities or lack of experience and knowledge if they have been given supervision or instruction by their guardians with relevant experience and knowledge concerning the use of the appliance in a safe way and understand the hazards involved.
- Juveniles and persons with reduced physical, sensory or mental capabilities shall be kept away unless continuously supervised by their guardians.
- Do not let juveniles play with the appliance.
- Keep detergents away from juveniles.
- Keep juveniles and pets away from the appliance when the door is open.

- Juveniles and persons with reduced physical, sensory or mental capabilities or lack of experience and knowledge shall not carry out cleaning and user maintenance of the appliance.

## General Safety

- This appliance is for household use only.
- Do not change the specification of this appliance.
- The appliance maximum load is 7 kg. Do not exceed the maximum load of each programme (refer to the "Programmes" chapter).
- The operating water pressure at the water entry point from the outlet connection must be between 0.5 bar (0.05 MPa) and 8 bar (0.8 MPa).
- The ventilation opening in the base must not be covered by a carpet, mat, or any floor covering.
- The appliance must be connected to the water mains using the new supplied hose sets, or other new hose sets supplied by the Authorised Service Centre.
- Old hose sets must not be reused.
- If the mains power supply cable is damaged, it must be replaced by the manufacturer, its Authorised Service Centre or similarly qualified persons to avoid an electrical hazard.
- Before any maintenance operation, deactivate the appliance and disconnect the mains plug from the socket.
- Do not use high pressure water sprays and/or steam to clean the appliance.
- Clean the appliance with a moist cloth. Use only neutral detergents. Do not use abrasive products, abrasive cleaning pads, solvents or metal objects.

## SAFETY INSTRUCTIONS

---

### Installation



The installation must comply with relevant national regulations.

- Remove all the packaging and the transit bolts including rubber bush with plastic spacer.
- Keep the transit bolts in a safe place. If the appliance is to be moved in the

future they must be reattached to lock the drum to prevent an internal damage.

- Always take care when moving the appliance as it is heavy. Always use safety gloves and enclosed footwear.
- Follow the installation instructions supplied with the appliance.
- Do not install or use a damaged appliance.
- Do not install or use the appliance where the temperature can be less than 0°C or where it is exposed to the weather.
- The floor area on which the appliance is to be installed must be flat, stable, heat resistant and clean.
- Make sure that there is air circulation between the appliance and the floor.
- When the appliance is in its permanent position, check if it is levelled correctly with the aid of a spirit level. If it is not, adjust the feet accordingly.
- Do not install the appliance directly above a floor drain.
- Do not spray water on the appliance and do not expose it to excessive humidity.
- Do not install the appliance where the appliance lid cannot be fully opened.
- Do not put a closed container to collect possible water leakage under the appliance. Contact the Authorised Service Centre to ensure which accessories can be used.

## Electrical connection



**WARNING!** Risk of fire and electric shock.

- The appliance must be earthed.
- Always use a correctly installed shockproof socket.
- Make sure that the parameters on the rating plate are compatible with the electrical ratings of the mains power supply.
- Do not use multi-plug adapters and extension cables.
- Make sure not to cause damage to the mains plug and to the mains cable.

Should the mains cable need to be replaced, this must be carried out by our Authorised Service Centre.

- Connect the mains plug to the mains socket only at the end of the installation. Make sure that there is access to the mains plug after the installation.
- Do not touch the mains cable or the mains plug with wet hands.
- Do not pull the mains cable to disconnect the appliance. Always pull the mains plug.
- This appliance is fitted with a 13 A mains plug. If it is necessary to change the mains plug fuse, use only a 13 A ASTA (BS 1362) fuse.

## Water connection

- The inlet water shall not exceed 25 °C.
- Do not cause damage to the water hoses.
- Before connection to new pipes, pipes not used for a long time, where repair work has been carried out or new devices fitted (water meters, etc.), let the water flow until it is clean and clear.
- Ensure that there are no visible water leaks during and after the first use of the appliance.
- Do not use an extension hose if the inlet hose is too short. Contact the Authorised Service Centre for the replacement of the inlet hose.
- When unpacking the appliance, it is possible to see water flowing from the drain hose. This is due to the testing of the appliance with the use of water in the factory.
- You can extend the drain hose to maximum 400 cm. Contact the Authorised Service Centre for the other drain hose and the extension.
- Make sure that there is access to the tap after the installation.

## Use



**WARNING!** Risk of injury, electric shock, fire, burns or damage to the appliance.

- Follow the safety instructions on the detergent packaging.
- Do not put flammable products or items that are wet with flammable products in, near or on the appliance.
- Do not wash fabrics which are heavily soiled with oil, grease or other greasy substances. It can damage rubber parts of the washing machine. Prewash such fabrics by hand before loading them into the washing machine.
- Make sure that all metal objects are removed from the laundry.

## Service

- To repair the appliance contact the Authorised Service Centre. Use original spare parts only.
- Please note that self-repair or non-professional repair can have safety consequences and might void the guarantee.
- Concerning the lamp(s) inside this product and spare part lamps sold separately: These lamps are intended

to withstand extreme physical conditions in household appliances, such as temperature, vibration, humidity, or are intended to signal information about the operational status of the appliance. They are not intended to be used in other applications and are not suitable for household room illumination.

## Disposal

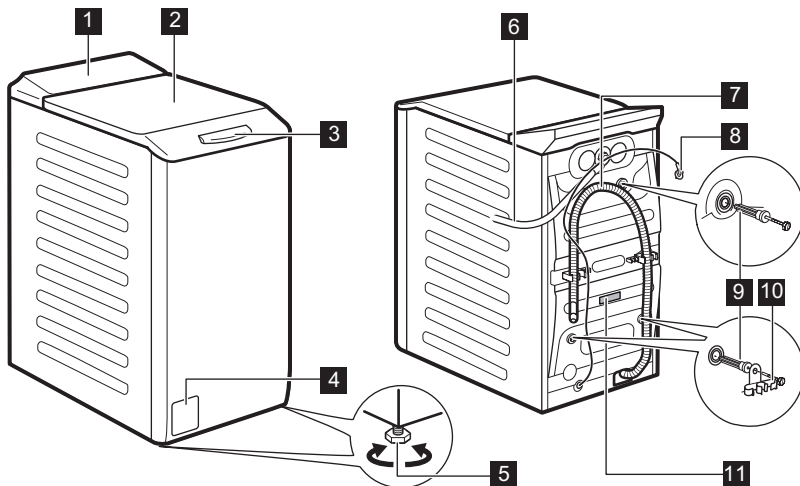


**WARNING!** Risk of injury or suffocation.

- Disconnect the appliance from the mains electrical and water supplies.
- Cut off the mains electrical cable close to the appliance and dispose of it.
- Remove the door catch to prevent children or pets from becoming trapped in the drum.
- Dispose of the appliance in accordance with local requirements for the disposal of Waste Electrical and Electronic Equipment (WEEE).

## PRODUCT DESCRIPTION

### Appliance overview



**1** Control panel

**2** Lid

- 3** Lid handle
- 4** Drain pump filter
- 5** Feet for levelling the appliance
- 6** Inlet hose
- 7** Drain hose
- 8** Mains cable
- 9** Transit bolts
- 10** Hose support
- 11** Rating plate

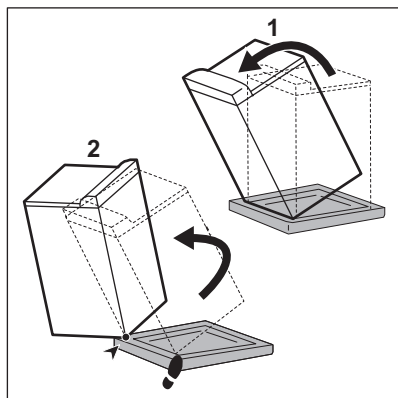
## INSTALLATION



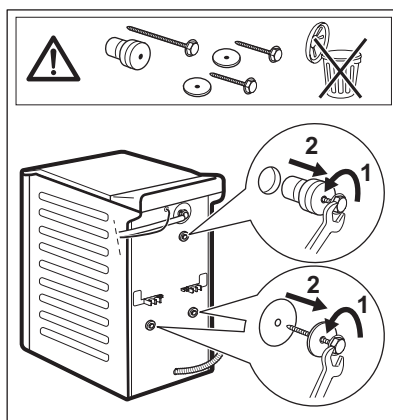
**WARNING!** Refer to Safety chapters.

### Unpacking

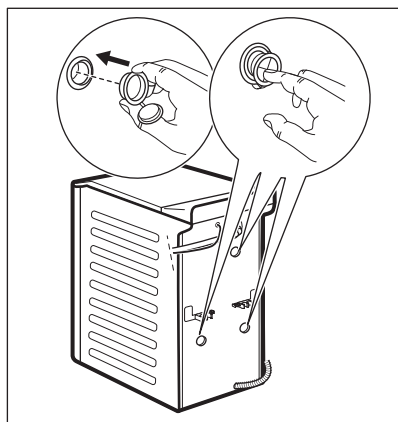
1.



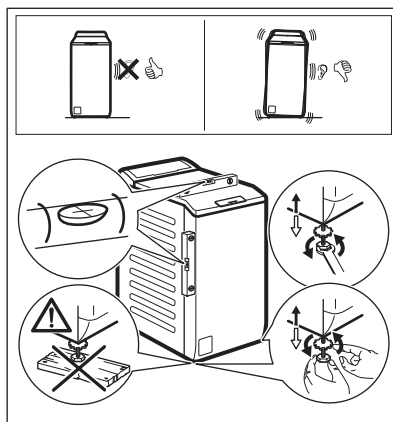
2.



3.



4.





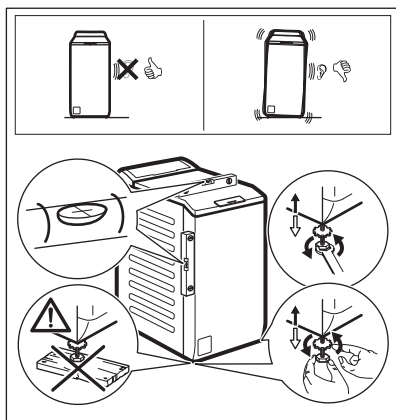
**We recommend that you keep the packaging and the transit bolts for any transport of the appliance.**

Adjust the appliance correctly to prevent vibration, noise and movement of the appliance when it operates.



**WARNING! Do not put cardboard, wood or equivalent materials below the appliance feet to adjust the level.**

## Positioning

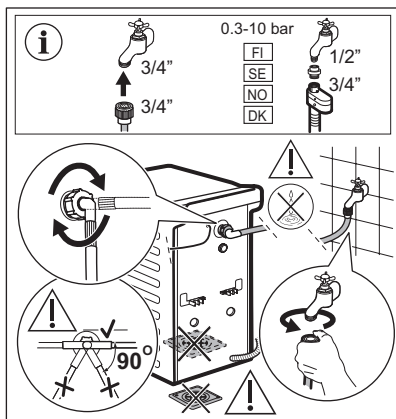


Accessories delivered with the appliance may vary depending on the model.

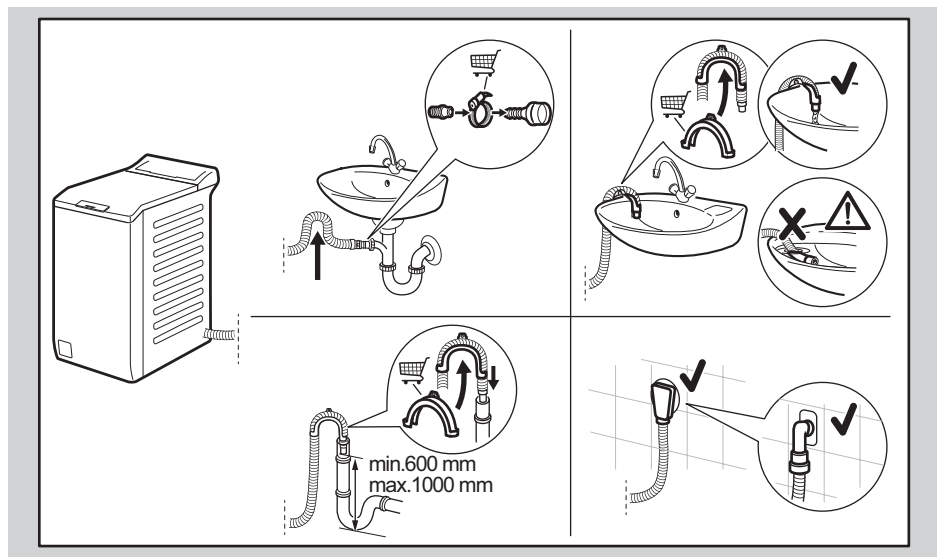


Make sure there is no damage to hoses and there are no leaks from the couplings. Do not use an extension hose if the inlet hose is too short. Contact the service centre for a replacement inlet hose.

## Water supply



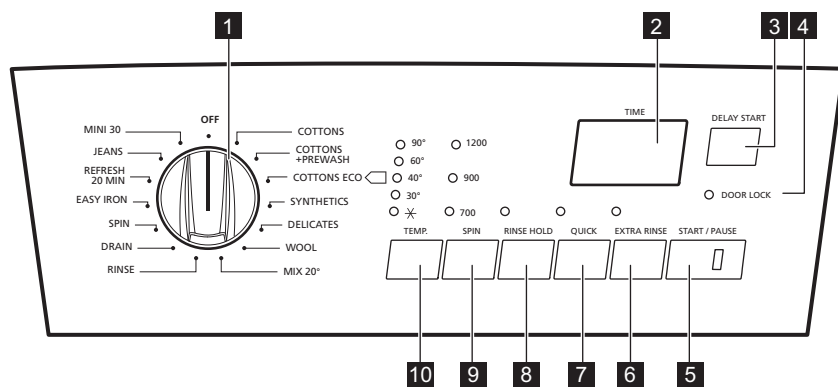
## Drainage



The drain hose should stay at a height of no less than 600 mm and not more than 1000 mm. You can extend the drain hose to maximum 4000 mm. Contact the authorised service centre for the other drain hose and the extension.

## CONTROL PANEL

### Control panel description



**1** Programme knob

**2** Display

**3** DELAY START button

**4** Lid locked indicator DOOR LOCK

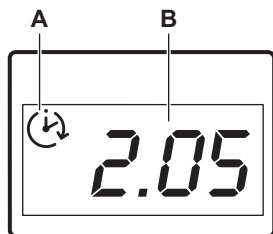
**5** START / PAUSE button



- 6** EXTRA RINSE button
- 7** QUICK button
- 8** RINSE HOLD button

- 9** SPIN reduction button
- 10** TEMP. button

## Display



- **A**  
The delay start .  
When you press the delay start button, the display shows the delay start time.
- **B**

This area shows:

- 1.25 - Programme duration
- 0 - Programme is completed
- 2h - Delay start hours
- E20 - Alarm codes (refer to the chapter 'Troubleshooting')
- Err - Message of error. Incorrect option selection: the display shows this message for some seconds if:
  - You set a option that is not suitable for the programme.
  - You change the programme while it operates.

## OPTIONS

### TEMP.

With this option you can change the default temperature.

Indicator ✱ = cold water

The indicator of the set temperature comes on.

### SPIN

With this option you can set the spin speed. For the maximum spin speeds see "Programmes".

The indicator of the set speed comes on.



To drain the water refer to 'At the end of the programme'.

### RINSE HOLD

Select this option to reduce creasing:

- The washing programme ends with water in the drum. The drum turns regularly to reduce creasing.

- The door stays locked. You must drain the water to unlock the door.



To drain the water refer to "Draining water out after the end of the cycle".

### QUICK

With this option you can decrease the programme duration.

Use this option for items with light soil or items to refresh.

The related indicator comes on.

### EXTRA RINSE

With this option you can add some rinses to a washing programme.

Use this option for persons allergic to detergents and in areas where the water is soft.

The related indicator comes on.

## DELAY START

With this option you can delay the start of a programme from 30 minutes to 20 hours.

The related indicator comes on and the display shows the delay time.

## SETTINGS

### Acoustic signals

The acoustic signals operate when:

- The programme is completed.
- The appliance has a malfunction.


To **deactivate/activate** the acoustic signals, touch the buttons

RINSE HOLD and QUICK at the same time for 4 seconds.



If you deactivate the acoustic signals, they continue operate when the appliance has a malfunction.

## PROGRAMME CHART

Programme Temperature range	Maximum load Maximum spin speed	Programme description (Type of load and level of soiling)
COTTONS 90°C - Cold (✱)	7 kg 1200 rpm	<b>White cotton.</b> Heavily and normally soiled items.
COTTONS + PRE- WASH 90°C - Cold (✱)	7 kg 1200 rpm	<b>White cotton and coloured cotton.</b> Heavily and normally soiled items.
 COTTONS ECO 60°C - 40°C <sup>1)</sup>	7 kg 1200 rpm	<b>White cotton and fast-coloured cotton.</b> Normally soiled items. The energy consumption decreases and the time of the washing programme is extended, ensuring good washing results.
SYNTHETICS 60°C - Cold (✱)	3 kg 1200 rpm	<b>Synthetic items or mixed fabric items.</b> Normally soiled items.
DELICATES 40°C - Cold (✱)	2,5 kg 700 rpm	<b>Delicate fabrics such as acrylics, viscose and mixed fabrics requiring gentler washing.</b> Normally and lightly soiled items.
WOOL 40°C - Cold (✱)	1,5 kg 1200 rpm	<b>Machine washable wool, hand washable wool and other fabrics</b> with «hand washing» care symbol <sup>2)</sup> .

Programme Temperature range	Maximum load Maximum spin speed	Programme description (Type of load and level of soiling)
MIX 20° 20°C	2,5 kg 1200 rpm	Special programme for lightly soiled cotton, synthetic and mixed fabrics. Select this programme to reduce the energy consumption. Make sure that the detergent is suitable for low temperature in order to have good washing results.
RINSE	2,5 kg 1200 rpm <sup>3)</sup>	To rinse and spin the laundry. <b>All fabrics</b> , except woollens and very delicate fabrics. Reduce the spin speed accordingly to the type of laundry.
DRAIN	7 kg	To drain the water in the drum. <b>All fabrics</b> .
SPIN	7 kg 1200 rpm	<b>All fabrics, except woollens and delicate fabrics</b> . To spin the laundry and to drain the water in the drum.
EASY IRON 60°C - Cold (✱)	1 kg 900 rpm	<b>Synthetic items requiring a gentle wash</b> . Normally and lightly soiled items. <sup>4)</sup>
REFRESH 20 MIN 30°C	1 kg 900 rpm	<b>Synthetic and delicate items</b> . Lightly soiled items or items to refresh.
JEANS 60°C - Cold (✱)	3 kg 1200 rpm	<b>Items in denim and jersey</b> . Also for dark coloured items.
MINI 30 30°C	1 kg 700 rpm	A short cycle for <b>lightly soiled synthetic and delicate items</b> or for items to freshen up.

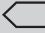
<sup>1)</sup> This programme at 60 °C and at maximum load is the 'standard cotton 60°C programme' used to determine the values reported in the energy label; test are done according to IEC 60456:2010.

<sup>2)</sup> During this cycle the drum rotates slowly to ensure a gentle wash. It can seem that the drum doesn't rotate or doesn't rotate properly, but this is normal for this programme.

<sup>3)</sup> The default spin speed is 700 rpm.

<sup>4)</sup> To reduce creasing, this cycle regulates the water temperature and performs a soft wash and spin phase. The appliance adds some rinses.

### Programme options compatibility

Programme	SPIN	RINSE HOLD	QUICK <sup>1)</sup>	EXTRA RINSE	DELAY START
COTTONS	■	■	■	■	■
COTTONS + PRE- WASH	■	■	■	■	■
 COTTONS ECO	■	■		■	■
SYNTHETICS	■	■	■	■	■

Programme	SPIN	RINSE HOLD	QUICK <sup>1)</sup>	EXTRA RINSE	DELAY START
DELICATES		■	■	■	■
WOOL	■	■			■
MIX 20°	■	■		■	■
RINSE	■	■		■	■
DRAIN					■
SPIN	■				■
EASY IRON	■	■		■	■
REFRESH 20 MIN	■				■
JEANS	■	■			■
MINI 30					■

<sup>1)</sup> When you set this option, we recommend that you decrease the quantity of the laundry. It is possible to keep the full load but the washing results can be unsatisfactory. Recommended load: cotton: 3,5 kg, synthetics and delicates: 1,5 kg.

## BEFORE FIRST USE



During installation or before first use you may observe some water in the appliance. This is residual water left in the appliance after a full functional test in the factory to ensure the appliance is delivered to customers in perfect working order and is no cause for concern.

1. Connect the mains plug to the mains socket.
2. Open the water tap.
3. Put a small quantity of detergent in the compartment for washing phase.
4. Set and start a programme for cotton at the highest temperature without laundry.

This removes all possible dirt from the drum and the tub.

## DAILY USE

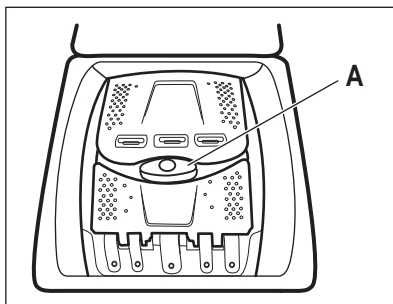


**WARNING!** Refer to Safety chapters.

### Loading the laundry

1. Open the appliance lid.

2. Push the button **A**.



The drum opens automatically.

3. Put the laundry in the drum, one item at a time.

4. Shake the items before you put them in the appliance.

Make sure not to put too much laundry in the drum.

5. Close the drum and the lid.



**CAUTION!** Before you close the lid of your appliance, make sure that you close the drum correctly.

## Detergent compartments. Using detergent and additives

1. Measure out specified detergents and the fabric conditioner.

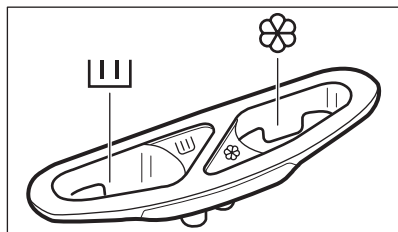
2. Put the detergent and the fabric conditioner into the proper compartments.



Always follow the instructions that you find on the packaging of the detergent products, but we recommend that you do not exceed the maximum indicated level. This quantity will however guarantee the best washing results.



When using liquid detergents add them into a dosing ball (supplied by the detergent's manufacturer). Put the dosing ball inside the washing machine's drum, on top of the garments.



When you set a prewash option, put the detergent for prewash phase directly into the drum.



Detergent compartment for washing phase.



Compartment for liquid additives (fabric conditioner, starch).

The mark **M** is the maximum level for the quantity liquid additives.

## Setting a programme

1. Turn the programme knob to switch the appliance on and set the programme:
  - The indicator of the button START / PAUSE flashes.
  - The display shows the programme duration.
2. If necessary, change the spin speed or add available options. When you activate an option, the indicator of the set option comes on.



If you set something incorrect, the display shows the message **E r r**.

## Starting a programme without the delay start

Press the button START / PAUSE.

- The indicator of the button START / PAUSE stops to flash and stays on.
- The programme starts, the lid locks, the indicator DOOR LOCK is on.
- The programme time decreases with steps of one minute.



The drain pump can operate for a short time at the beginning of the washing cycle.

## Starting a programme with the delay start option


1. Press the button DELAY START again and again until the display shows the delay you want to set.
2. Press the button START / PAUSE:
  - The lid is locked and the indicator DOOR LOCK is on.

- The appliance starts the countdown.
- When the countdown is completed, the programme starts automatically.



You can cancel or change the set of the DELAY START option before you press the button START / PAUSE. After pressing the button START / PAUSE you can only cancel the DELAY START option.

To cancel the DELAY START option:

- Press the button START / PAUSE to set the appliance to pause. The indicator of button START / PAUSE flashes.
- Press the button DELAY START until the display shows . Press the button START / PAUSE again to start the programme immediately.

## Changing the options

You can change only some option before they operate.

- Press the button START / PAUSE. The indicator flashes.
- Change the options.
- Press the button START / PAUSE. The programme continues.

## Opening the lid

While a programme operates or the delay start operates, the appliance lid is locked.



**CAUTION!** If the temperature and level of the water in the drum are too high, you cannot open the lid.

### Open the lid during the first 10 minutes of the cycle and when the delay start operates:

- Press the button START / PAUSE to pause the appliance.
- Wait a couple of minutes and then you can open a lid.
- Close the lid and press button START / PAUSE again. The

programme (or the delay start) continues.

### Open the lid when the programme operates:

- Turn the programme knob to position OFF to deactivate the appliance.
- Wait for some minutes and then open the appliance lid.
- Close the lid and set the programme again.


## Cancelling a running programme

- Turn the programme knob to position OFF to cancel the programme and to deactivate the appliance.
- Turn the programme knob again to activate the appliance. Now, you can set a new washing programme.



Before starting the new programme the appliance could drain the water. In this case, make sure that the detergent is still in the detergent compartment, if not fill the detergent again.

## At the end of the programme

- The appliance stops automatically. The acoustic signal operates (if it is activated).
- The indicator of the button START / PAUSE goes off and in the display  comes on.
- After a couple of minutes the door lock indicator DOOR LOCK goes off.
- You can open the lid.
- Remove the laundry from the appliance. Make sure that the drum is empty. Close the water tap.
- Turn the programme knob to position OFF to deactivate the appliance. Unplug the appliance.
- Keep the lid ajar, to prevent the mildew and odours.

**The washing programme is completed, but there is water in the drum:**

- The drum turns regularly to prevent the creases in the laundry.
- The indicator of button START / PAUSE flashes. The lid stays locked.
- You must drain the water to open the lid.

#### To drain the water:

1. Set a "Drain" or a "Spin" programme. If necessary, decrease the spin speed.
2. Press the button START / PAUSE. The appliance drains the water and spins.
3. When the programme is completed, after a couple of minutes, you can open the lid.

4. Turn the programme knob to position OFF to deactivate the appliance.

### Stand by

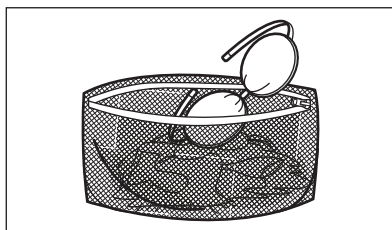
Some minutes after the end of the washing programme, if you do not deactivate the appliance, the energy saving status activates. The energy saving status decreases the energy consumption when the appliance is on the standby.

Press one of the buttons to deactivate the energy saving status.

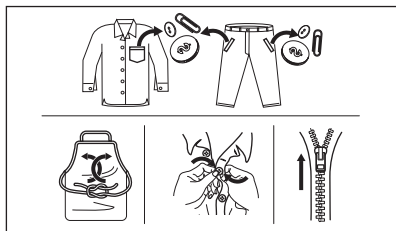
## HINTS AND TIPS

### The laundry load

- Divide the laundry in: white, coloured, synthetics, delicates and wool.
- Obey the washing instructions that are on the laundry care labels.
- Do not wash white and coloured items together.
- Some coloured items can discolour with the first wash. We recommend that you wash them separately for the first times.
- Turn multilayered fabrics, wool and items with painted illustrations inside out.
- Wash and pre-treat heavy soil stains with a suitable detergent before putting in drum.
- Be careful with the curtains. Remove the hooks and put the curtains in a washing bag or pillowcase.
- Do not wash laundry without hems or with cuts. Use a washing bag to wash small and/or delicate items (e.g. underwired bras, belts, tights, shoelaces, ribbons, etc. ).



- A very small load can cause balance problems with the spin phase leading to excessive vibration. If this occurs:
  - interrupt the programme and open the door (refer to "Daily Use" chapter);
  - manually redistribute the load so that the items are spaced evenly around the tub;
  - press the START / PAUSE button. The spin phase continues.
- Button up pillowcases, close zippers, hooks and poppers. Tie up belts, cords, shoelaces, ribbons and any other loose elements.
- Empty the pockets and unfold the items.



## Stubborn stains

For some stains, water and detergent is not sufficient.

We recommend that you pre-treat these stains before you put the items in the appliance.

Special stain removers are available. Use the special stain remover that is applicable to the type of stain and fabric.

## Detergent type and quantity.

The choice of detergent and use of correct quantities not only affects your wash performance, but also helps to avoid waste and protect the environment:

- Use only detergents and other treatments specially made for washing machines. First, follow these generic rules:
  - powder detergents for all types of fabric, excluding delicate. Prefer powder detergents containing bleach for whites and laundry sanitization,
  - liquid detergents, preferably for low temperature wash programmes (60 °C max) for all types of fabric, or special ones for woollens only.
- The choice and quantity of detergent will depend on: type of fabric (delicates, woollens, cottons, etc), the colour of clothes, size of the load, degree of soiling, wash temperature and hardness of the water used.
- Follow the instructions that you find on packaging of the detergents or other treatments without exceeding the indicated maximum level (**MAX**).

- Do not mix different types of detergents.
- Use less detergent if:
  - you are washing a small load,
  - the laundry is lightly soiled,
  - there is large amounts of foam during washing.
- When using detergent tabs or pods, always put them inside the drum, not in the detergent dispenser and follow the manufacturer's recommendations.
- Low sudsing detergent is required for this washing machine to prevent oversudsing problems, unsatisfactory washing result and harm to the machine.

Low sudsing detergents designed for horizontal-axis washing machines are labelled "Front Loading", "high efficiency", "HE", such as Cold Power for Front Loaders or "Matic".

Do not use wrong types of detergent, such as Top Loading, Hand wash detergent or Soap-Based products in this washing machine. This can result in excessive suds, longer cycle time, low spin speeds, poor rinsing and overloading of the motor

### Insufficient detergent may cause:

- unsatisfactory washing results,
- the wash load to turn grey,
- greasy clothes,
- mould in the appliance.

### Excessive detergent may cause:

- sudsing,
- reduced washing effect,
- inadequate rinsing,
- a greater impact for the environment.

## Ecological hints

To save water, energy and to help protect the environment, we recommend that you follow these tips:

- **Normally soiled laundry** may be washed **without prewash** in order to save detergent, water and time (the environment is protected too!).
- Loading the appliance to the **maximum capacity indicated for each**



### programmes helps to reduce energy and water consumption.

- With adequate pre-treatment, stains and limited soiling can be removed; the laundry can then be washed at a lower temperature.
- To use the correct quantity of detergent, refer to the quantity suggested by the detergent producer and check the water hardness of your domestic system. Refer to "Water hardness".
- Set the **maximum possible spin speed** for the selected washing programme **before drying your laundry in a tumble dryer**. This will save energy during drying!

## CARE AND CLEANING

---



**WARNING!** Refer to Safety chapters.

### External cleaning

Clean the appliance with soap and warm water only. Fully dry all the surfaces. Do not use a scouring pads or any scratching material.



**CAUTION!** Do not use alcohol, solvents or chemical products.



**CAUTION!** Do not use the metal surfaces with chlorine-based detergent.

### Descaling

If the water hardness in your area is high or moderate, we recommend that you use a water descaling product for washing machines.

Regularly examine the drum to prevent limescale and rust particles.

To remove rust particles use only special products for washing machines. Do this separately from the laundry wash.

### Water hardness

If the water hardness in your area is high or moderate, we recommend that you use a water softener for washing machines. In areas where the water hardness is soft it is not necessary to use a water softener.

To know the water hardness in your area, contact your local water authority.

Use the correct quantity of the water softener. Obey the instructions that you find on the packaging of the product.



Always obey the instructions that you find on the packaging of the product.

### Maintenance wash

With the low temperature programmes it is possible that some detergent stays in the drum. Perform a maintenance wash regularly. To do this:

- Remove all laundry from the drum.
- Select the cotton programme with the highest temperature with a small quantity of detergent.

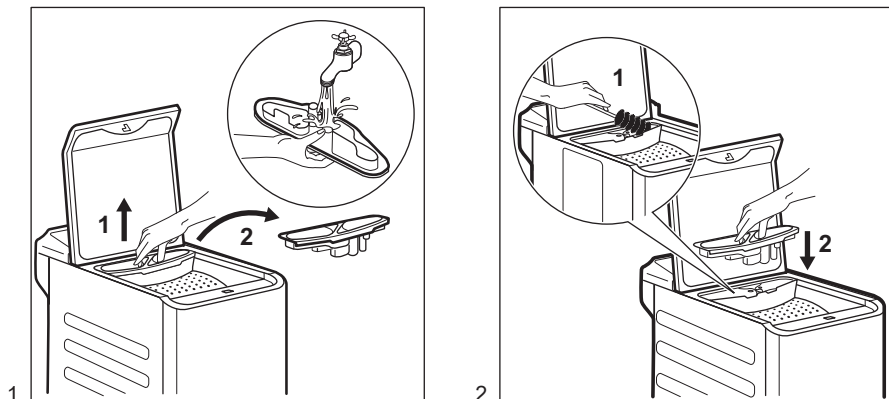
### Lid seal

Regularly examine the seal and remove all objects from the inner part. Clean it when needed, using ammonia cream cleanser agent without scratching the seal surface.



Always obey the instructions that you find on the packaging of the product.

## Cleaning the detergent dispenser



## Cleaning the drain filter

Regularly check the drain pump filter and make sure that it is clean.

Clean the drain pump filter if:

- The appliance does not drain the water.
- The drum does not turn.
- The appliance makes an unusual noise because of the blockage of the drain pump.
- The display shows the alarm code

E20

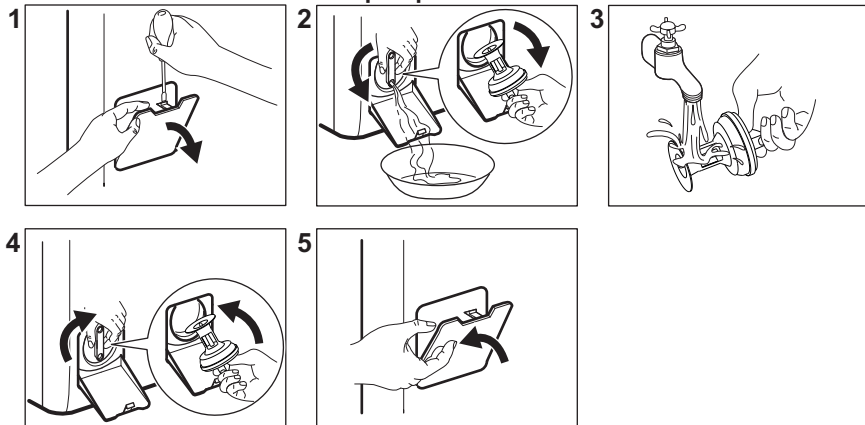


### WARNING!

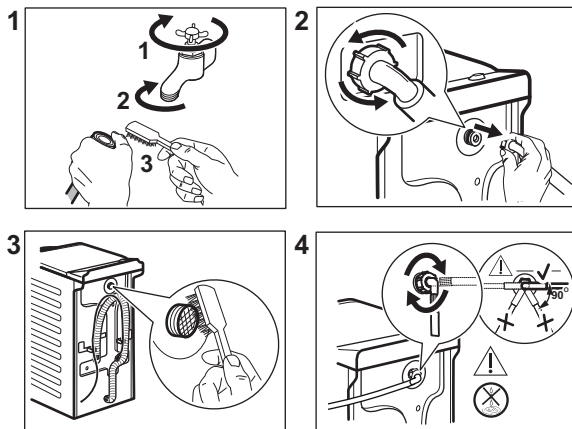
- Disconnect the mains plug from the mains socket.
- Do not remove the filter while the appliance operates.
- Do not clean the pump if the water in the appliance is hot. Wait until the water cools down .

Always keep a rag nearby to dry up any water spillages when removing the filter.

Proceed as follows to clean the pump:



## Cleaning the inlet hose and the valve filter



## Emergency drain

If the appliance cannot drain the water, carry out the same procedure, described in 'Cleaning the drain pump' paragraph. If necessary, clean the pump.

## Frost precautions

If the appliance is installed in an area where the temperature can be less than 0° C, remove the remaining water from the inlet hose and the drain pump.

1. Disconnect the mains plug from the mains socket.
2. Close the water tap.

3. Put the two ends of the inlet hose in a container and let the water flow out of the hose.
4. Empty the drain pump. Refer to the emergency drain procedure.
5. When the drain pump is empty, install the inlet hose again.



**WARNING!** Make sure that the temperature is higher than 0 °C before you use the appliance again.

The manufacturer is not responsible for damages caused by low temperatures.

## TROUBLESHOOTING



**WARNING!** Refer to Safety chapters.

## Alarm Codes and Possible failures

The appliance does not start or it stops during operation. First try to find a solution to the problem (refer to the tables).



**WARNING!** Deactivate the appliance before carrying out any check.

With some problems, the display shows an alarm code and the START / PAUSE button may flash continuously:

Problem	Possible solution
<b>E 10</b> The appliance does not fill with water properly.	<ul style="list-style-type: none"> <li>• Make sure that the water tap is open.</li> <li>• Make sure that the pressure of the water supply is not too low. For this information, contact your local water authority.</li> <li>• Make sure that the water tap is not clogged.</li> <li>• Make sure that the inlet hose has no kinks, damages or bends.</li> <li>• Make sure that the connection of the water inlet hose is correct.</li> <li>• Make sure that the filter of the inlet hose and the filter of the valve are not clogged. Refer to 'Care and cleaning'.</li> </ul>
<b>E20</b> The appliance does not drain the water.	<ul style="list-style-type: none"> <li>• Make sure that the sink spigot is not clogged.</li> <li>• Make sure that the drain hose has no kinks or bends.</li> <li>• Make sure that the connection of the drain hose is correct.</li> <li>• Set the drain programme if you set a programme without drain phase.</li> <li>• Set the drain programme if you set an option which ends with water in the tub.</li> </ul>
<b>E40</b> The appliance lid is open or not closed correctly.	<ul style="list-style-type: none"> <li>• Make sure that the lid is properly closed.</li> </ul>
<b>E91</b> No communication between electronic elements of the appliance.	<ul style="list-style-type: none"> <li>• The programme was not finished properly or the appliance stopped too early. Switch the appliance off and on again.</li> <li>• If the alarm code appears again, contact the Authorised Service Centre.</li> </ul>
<b>EAD</b> The appliance drum doors are open or not closed correctly.	<ul style="list-style-type: none"> <li>• Make sure that drum doors are properly closed.</li> </ul>
<b>EKO</b> The mains supply is unstable.	<ul style="list-style-type: none"> <li>• Wait until mains supply is stable.</li> </ul>

If the display shows other alarm codes, deactivate and activate the appliance. If the problem continues, contact the Authorised Service Centre.

In case of different problem with the washing machine check the table below for possible solutions.

Problem	Possible solution
The programme does not start.	<ul style="list-style-type: none"> <li>• Make sure that the mains plug is connected to the mains socket.</li> <li>• Make sure that the appliance lid and drum door are closed.</li> <li>• Make sure that there is no damaged fuse in the fuse box.</li> <li>• Make sure that the START / PAUSE has been touched.</li> <li>• If the delay start is set, cancel the setting or wait for the end of countdown.</li> <li>• Deactivate the Child Lock function if it is on.</li> <li>• Check the position of the knob on the selected programme.</li> </ul>
The appliance fills with water and drains immediately.	<ul style="list-style-type: none"> <li>• Make sure that the drain hose is in the correct position. The hose may be positioned too low. Refer to "Installation instruction".</li> </ul>
The spin phase does not operate or the washing cycle lasts longer than usual.	<ul style="list-style-type: none"> <li>• Set the spin programme.</li> <li>• Adjust manually the items in the tub and start the spin phase again. This problem may be caused by balance problems.</li> </ul>
There is water on the floor.	<ul style="list-style-type: none"> <li>• Make sure that the couplings of the water hoses are tight and there is not water leakages.</li> <li>• Make sure that the water inlet hose and the drain hose have no damages.</li> <li>• Make sure you use the correct detergent and the correct quantity of it.</li> </ul>
You cannot open the appliance lid.	<ul style="list-style-type: none"> <li>• Make sure that a washing programme that ends with water in tub, has not been selected.</li> <li>• Make sure that the washing programme is finished.</li> <li>• Set the drain or the spin programme if there is water in the drum.</li> <li>• Make sure that the appliance receives electrical power.</li> <li>• This problem may be caused by a failure of the appliance. Contact the Authorised Service Centre.</li> </ul>
The appliance makes an unusual noise and vibrates.	<ul style="list-style-type: none"> <li>• Make sure the levelling of the appliance is correct. Refer to "Installation instruction".</li> <li>• Make sure that the packaging and/or the transit bolts are removed. Refer to "Installation instruction".</li> <li>• Add more laundry in the drum. The load may be too small.</li> </ul>
The washing results are not satisfactory.	<ul style="list-style-type: none"> <li>• Increase the detergent quantity or use a different detergent.</li> <li>• Use special products to remove the stubborn stains before you wash the laundry.</li> <li>• Make sure that you set the correct temperature.</li> <li>• Decrease the laundry load.</li> </ul>
Too much foam in the drum during the washing cycle.	<ul style="list-style-type: none"> <li>• Reduce the quantity of detergent.</li> </ul>

After the check, activate the appliance. The programme continues from the point of interruption.

If the problem occurs again, contact the Authorised Service Centre.


The necessary data for the service centre on the rating plate.


## TECHNICAL DATA

Dimension	Width/ Height/ Depth/ Total depth	400 mm/ 890 mm/ 600 mm/ 600 mm
Electrical connection	Voltage Overall power Fuse Frequency	220-230 V 2200 W 13 A 50 Hz
Level of protection against ingress of solid particles and moisture ensured by the protective cover, except where the low voltage equipment has no protection against moisture		IPX4
Water supply pressure	Minimum Maximum	0.5 bar (0.05 MPa) 8 bar (0.8 MPa)
Water supply <sup>1)</sup>		Cold water
Maximum Load	Cotton	7 kg
Spin Speed	Maximum spin speed	1200 rpm

<sup>1)</sup> Connect the water inlet hose to a water tap with a 3/4" thread.

## ENVIRONMENTAL CONCERNS

Recycle materials with the symbol . Put the packaging in relevant containers to recycle it. Help protect the environment and human health by recycling waste of electrical and electronic appliances. Do

not dispose of appliances marked with the symbol  with the household waste. Return the product to your local recycling facility or contact your municipal office.



