

gemini
ITALY

STICK / HANDHELD
RECHARGEABLE
VACUUM CLEANER

直立/手提
充電式吸塵機

Model No./ 型號: GVC100BK

Please read this instruction manual carefully before
use and keep it for future reference.

請於使用前仔細閱讀本說明書並加以保存。

SAFETY INSTRUCTION

Attention! When using electric tools, basic safety precautions should be followed to reduce the risk of fire, electric shock and personal injury, including the following,

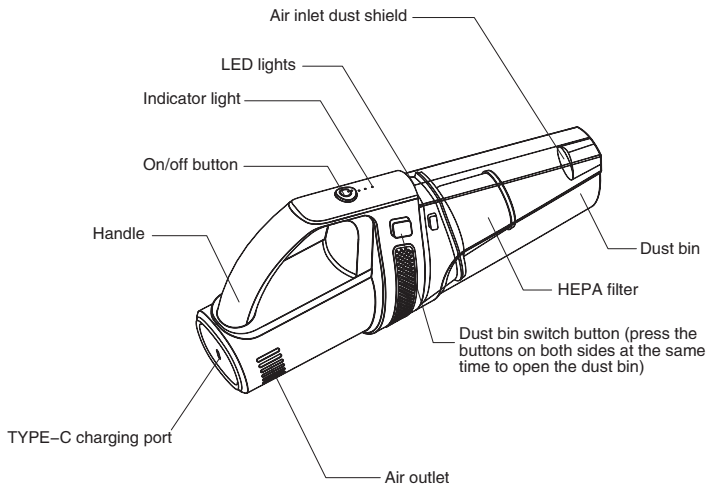
Please read this manual carefully before operating this product and retain it for future reference.


1. For the first time use or use after long-term storage, please fully charge the product. Please use the power adapter of 5V/2A or above which need a safety certification, and a standard charging line to charge the product.
2. Long press the power button, the indicator light flashes, the vacuum cleaner cannot be started, the battery is low, please charge it immediately.
3. Please use the charging cable delivered by this machine to charge the product, or use the mobile phone charger to charge the product. It is forbidden to purchase an adapter to charge the product without permission.
4. The battery life of the vacuum cleaner may decrease as the number of times the product is used increases.
5. Clean up the HEPA filter in time, otherwise it will affect the dust removal effect.
6. After using the product, please put it in a cool, dry, away from high temperature, high humidity and high dust environment.
7. When using this product to remove dust, it is strictly forbidden to inhale combustion materials, such as cigarette butts, just-extinguished charcoal ashes and burning paper scraps.
8. Due to the built-in high-rate lithium battery, it is strictly forbidden to disassemble the product without permission in case of abnormal noise or other suspected quality problems.
9. Do not use this product to absorb water and wet objects, otherwise it will damage the motor and cause permanent damage to the product, and the product quality problems caused by this behavior are not covered by the product warranty.
10. After use, please put it out of the reach of children. Children are strictly prohibited from operating without permission.
11. This product is not suitable for use in high magnetic field environments.
12. The filter should be cleaned frequently. If the filter is too dirty, it will affect the use of the vacuum cleaner.

! WARNING

1. Do not place in high temperature or high humidity environment.
2. Do not modify, disassemble, crush, or throw into fire.
3. If there is any abnormality, please do not continue to use and disassemble without permission.
4. It is strictly forbidden to use unapproved or incompatible adapters and charging cables to charge the product, which may cause malfunctions and dangers.
5. Before long-term storage, please fully charge the product. Please charge the battery to at least 85%. It is recommended to charge the battery every 2–3 months to extend its service life. Otherwise, the service life of the battery will be affected and the product cannot be used normally.
6. This product is not suitable for use by children, or persons with physical, sensory and mental impairments.

APPLIANCE COMPONENTS

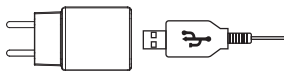


	Press and hold for 1s to start the vacuum cleaner, short press the first gear/second gear cycle, long press for 1s to shut down.
100% ● 60% ● 30% ●	The battery is fully charged: Three indicators are always on (with the increase of the machine use time, the battery power gradually decreases, and the indicator lights turn off in turn) The battery is discharged: the three indicators flash, and the machine shuts down at the same time charging: The three indicators flash alternately
Vacuum degree	First gear about 8000Pa / Second gear about 13000Pa
Product power	100W
Working noise	<95dB
Working voltage	11.1V
Battery Specification	2000mA*3
Endurance time	First gear 20–25min / Second gear 10–13min
Charging time	About 4H
Charging voltage	DC–5V
Charging current	≥2000mA
Charging port	TYPE–C
Working Temperature	–10°C–50°C (14°F~ 122°F)
Storage Temperature	–20°C–60°C (–4°F~140°F)
Dust cup capacity	0.35L
Product Dimension	H*W*D: 35.1*14*10.4CM
Weight	About 1.2kg

How to Charge

Recommend using 5V=2.4A charger.

5V = 2.4A



(Tip: This product does not contain adapters)

1. Place the vacuum cleaner on the desktop/flat surface.
2. Insert the USB power cable into the charging hole of the vacuum cleaner.
3. Connect the other end of the power cord to a 5V=2.4A USB socket, such as a USB charger, mobile power supply, etc.

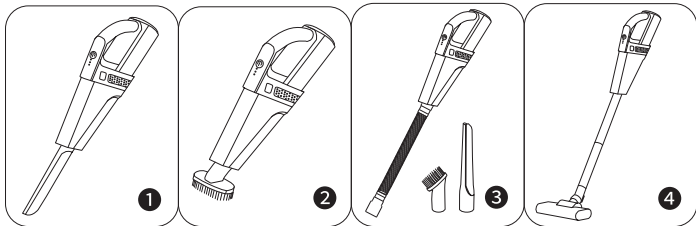
Note: Please use the charging cable delivered by this machine or the purchased mobile phone charger to charge the product.

Note

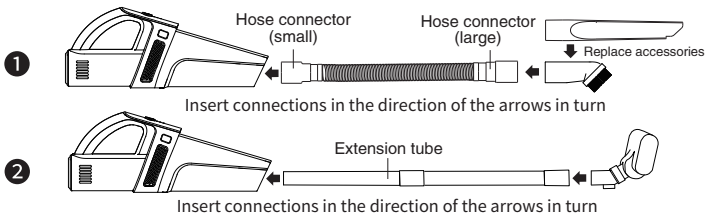
1. When the power supply is exhausted, the three indicators flash and turn off to protect the equipment.
2. The battery is not removable. Please do not squeeze or remove the battery.
3. When the ambient temperature exceeds 50°C/140°F, it is forbidden to use the battery.
4. Please charge the battery to 60% before not using the storage for a long time.
5. If the machine stops working in a short time, please keep the battery fully charged.

Accessories installation and use



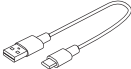


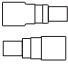



1. Suction nozzle: suitable for dust cleaning of various gaps such as doors, seats, cabinet corners, drawers and ashtrays.
2. Brush: It combines the dual functions of suction and wiping, and is suitable for cleaning dust on various surfaces such as cushions, suede parts of foot pads, keyboards and air-conditioning outlets.
3. Corrugated hose: it can be twisted at any angle, and can be used to clean various inaccessible corners with other accessories.
4. Extension tube+floor brush: suitable for dust cleaning on the floor, bed bottom, sofa bottom, cabinet bottom and various large flat surfaces that cannot be touched.



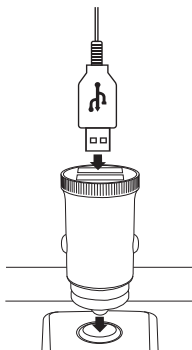
Installation method of corrugated hose and floor brush



What's in the box

	Car charger	X1
	Suction nozzle	X1
	TYPE-C charging cable	X1
	Brush	X1
	30cm corrugated hose	X1
	Hose connector (small/large)	X2
	Floor brush	X1
	Extension tube	X2
	Small brush	X1

Car charger use and safety instructions



One end of the car charger is inserted into the car cigarette hole, straight into the bottom, so that it is tightly stuck with the cigarette hole, after the USB interface is powered on, it lights up with blue light, and then the other end is connected to the USB charging cable.

Product Name:	Car charger
Product size:	24*46mm
Product weight:	20g
Material:	All aluminum alloy
Input:	DC 12V-24V
Output:	5V/2.4A
Applicable models:	12V-24V models

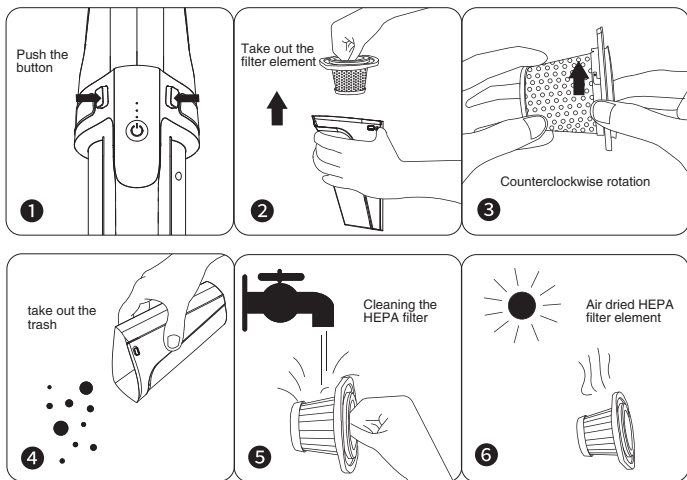
Note:

1. Do not allow the machine to collide with hard objects, as this may cause grinding on the surface of the machine or other hardware damage.
2. Please use the voltage specified by this machine (DC 12V-24V), otherwise the machine may work abnormally or damaged.
3. For a long time of non-use, please disconnect the unit from the power supply of the cigarette lighter.
4. For safety reasons, do not use this product under drops, high temperatures or short circuits, do not throw this product into fire, and keep this product out of the reach of children.

How to Clean

1. Press the dust bin switch buttons on both sides of the host at the same time, and the dust collection hood will open automatically.
2. Remove the filter element from the dust collection hood.
3. Rotate the filter element anticlockwise to separate the steel mesh from the HEPA filter element.
4. Pour the garbage in the dust collection hood into the garbage can.
5. If necessary, clean the dust collection cover with a slightly wet rag or disposable paper towel; The filter element can be flushed with water.
6. After cleaning, the filter element must be thoroughly dried before reuse. (Do not expose to the sun)

▲ Note: After washing, the filter element must be dried and then installed into the dust collection cover. It is forbidden to install the filter element into the dust collection cover without drying, so as to prevent the moisture of the filter element from causing corrosion of the motor and the base plate.



MULTIPLE CIRCUIT PROTECTION

Over-charge protection: When voltage reaches 4.2 V, it will automatically stop charging and prevents the damage caused by the over charging of the battery.

Over-discharge protection: When the fan speed will automatically decrease to protect the device when power is going to exhaust.

Over-voltage protection: When the external charging voltage is higher than 4.25V, it will automatically stop charging.



This marking indicates that this product should not be disposed with other household wastes.

To prevent possible harm to the environment or human health from uncontrolled waste disposal, recycle it responsibly to promote the sustainable reuse of material resources. To return your used device, please use the return and collection systems or contact the retailer where the product was purchased. They can take this product for environmental safe recycling.

TECHNICAL DATA

Model No. : GVC100BK

Power supply: DC 5V/ 2A

Product power : 100W

Dust cup capacity: 0.35L

Product Dimensions: H*W*D: 35.1*14*10.4 CM

Product size: H*W*D: 111*14*10.4 CM (including floor mop)

Net Weight: About 1.2kg

重要安全事項

注意：當使用此產品時，應遵循基本的安全預防措施，以減少火災，觸電和人身傷害的風險，包括以下內容：

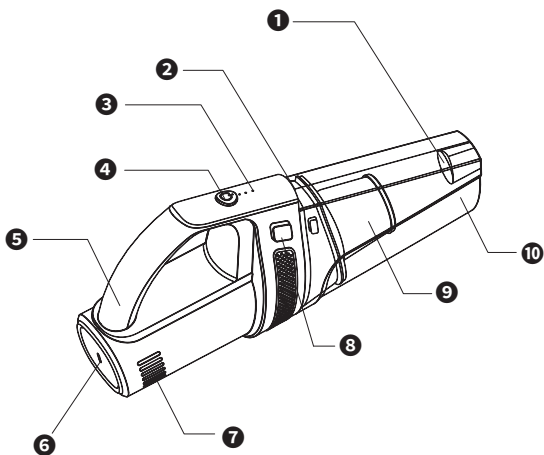
在操作本產品之前，請仔細閱讀本手冊，並保留本手冊以備將來參考。

1. 首次使用或長期存放後使用，請將產品充滿電，請使用經過安全認證的5V/2A及以上的轉接器和標配的充電線給產品充電。
2. 長按開機鍵指示燈閃爍，吸塵機無法啟動，是電池電量不足，請即時充電。
3. 請使用本機配送的充電線給產品充電，或者使用手機充電器給產品充電，禁止私自購買轉接器給產品充電。
4. 隨著產品使用次數的增加，吸塵機續航時間可能會衰減。
5. 要及時清理HEPA 濾網，否則會影響除塵效果。
6. 產品使用完畢後請放在陰涼、乾燥、遠離高溫、高濕、高塵環境。
7. 在使用本產品除塵時嚴禁吸入燃燒物，如煙頭、剛熄滅的炭火灰和燃燒的紙屑。
8. 因內置高倍率鋰電池，如遇產品異響或其他疑似質量問題嚴禁私自拆卸。
9. 請勿使用本產品吸水以及潮濕物體，否則會損壞電機造成產品永久損壞，由此行為造成的產品質量問題不屬於產品質保範疇。
10. 使用完畢後請放在兒童觸摸不到的地方，嚴禁兒童私自操作。
11. 本產品不適用高磁場環境下使用。
12. HEPA 濾網應經常清潔，如果HEPA 濾網太臟，會影響吸塵機的使用。


警告

1. 請勿置於高溫或高濕的環境中。
2. 禁止改裝、拆卸、擠壓、或投入火中。
3. 如出現異常請勿繼續使用。
4. 嚴禁使用未經認證許可或不兼容的轉接器、充電線給產品充電、可能引發故障和危險。
5. 長期存放前，請將產品充滿電，請至少將電池充電至85%，並建議每2-3個月充電一次，以延長電池使用壽命，否則會影響電池使用壽命，導致產品不能正常使用。
6. 本產品不適用兒童、或肢體、感官、精神上有缺陷的人使用。

產品部件



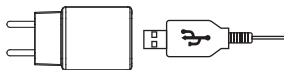
- | | |
|-----------|-------------------------|
| 1. 進風口擋塵片 | 6. TYPE-C充電口 |
| 2. LED照明燈 | 7. 出風口 |
| 3. 指示燈 | 8. 塵格開關按鈕（兩側按鈕同時按壓打開塵格） |
| 4. 開關機按鍵 | 9. HEPA濾網 |
| 5. 手持握柄 | 10. 塵格 |

	<p>長按1秒鐘啟動吸塵機，短按1檔/2檔循環，再次長按1秒鐘關閉吸塵機。</p>
<p>100% ● 60% ● 30% ●</p>	<p>電池滿電：三個指示燈常亮（隨著機器的使用時間增加，電池電量逐漸降低，指示燈依次熄滅） 電池電量耗盡：三個指示燈同時閃爍並關機充電：指示燈循環交替閃爍</p>
<p>真空度</p>	<p>一檔約8000Pa / 二檔約13000Pa</p>
<p>產品功率</p>	<p>100W</p>
<p>工作噪音</p>	<p><95dB</p>
<p>額定電壓</p>	<p>11.1V</p>
<p>電池規格</p>	<p>2000mA*3</p>
<p>續航時間</p>	<p>一檔20-25分鐘 / 二檔10-13分鐘</p>
<p>充電時間</p>	<p>約 4小時</p>
<p>充電電壓</p>	<p>DC-5V</p>
<p>充電電流</p>	<p>≥2000mA</p>
<p>充電口</p>	<p>TYPE-C</p>
<p>工作溫度</p>	<p>-10°C~50°C (14°F~ 122°F)</p>
<p>儲存溫度</p>	<p>-20°C~60°C (-4°F~140°F)</p>
<p>塵格容量</p>	<p>0.35L</p>
<p>產品尺寸</p>	<p>高*寬*深: 35.1*14*10.4CM</p>
<p>重量</p>	<p>約1.2千克</p>

充電方法

建議使用5V=2.4A充電器充電

5V = 2.4A



(注明: 本產品不包含轉接器)

- 1.將吸塵機放到桌面上/平面上。
- 2.將USB電源線插入吸塵機充電孔位上。
- 3.將電源線另一頭與5V=2.4A的USB插座連接，如USB充電器、移動電源等。

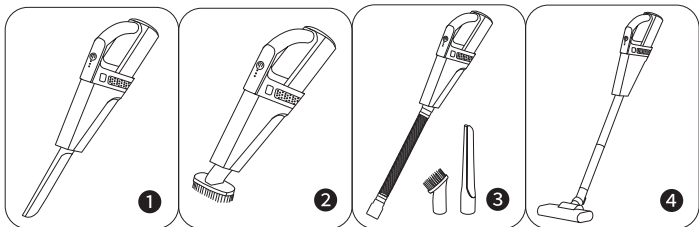
注意：請使用本機配送的充電線或者使用購買的手機充電器給產品充電。

注意事項

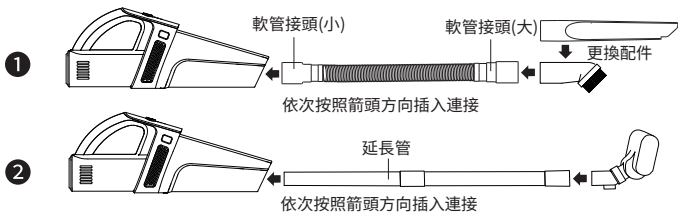
- 1.當電源耗盡時，三顆指示燈閃爍並關機以保護設備。
- 2.電池是不可拆卸的，請不要擠壓或拆卸電池。
- 3.當環境溫度超過50°C/140°F時，嚴禁使用電池。
- 4.在長時間不使用存儲之前，請將電池充電至60%。
- 5.如果機器在短時間內停止工作，請保持電池充滿電。

配件安裝及使用


- 1.吸嘴：適合車門、座椅、櫥櫃邊角、抽屜以及煙灰缸等各種縫隙的灰塵清理
- 2.毛刷：集合吸、擦雙重功效，適合各種坐墊、腳墊絨面部位、鍵盤以及空調出風口等表面的灰塵清理。
- 3.波紋軟管：可以任意角度扭曲，可以用其他配件清潔各種觸及不到的角落。
- 4.延長管+地板刷：適用於地板、床底、沙發底、櫥櫃底以及各種不能觸摸的大平面的灰塵清潔。



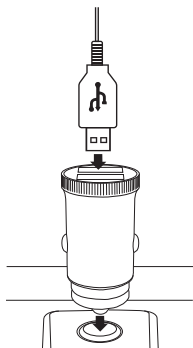
波紋軟管及地板刷的安裝方法：



配件內容

	車載充電器	X1
	吸嘴	X1
	TYPE-C 充電線	X1
	毛刷	X1
	30cm波紋軟管	X1
	軟管接頭 (小/大)	X2
	地板刷	X1
	延長管	X2
	小毛刷	X1

車載充電器使用及安全須知



車載充電器一端插入汽車點煙孔，直插入底，使其與點煙孔緊緊卡住，USB接口通電後，亮起藍光，然後另一端與USB充電線連接即可。

產品名稱：	車載充電器
產品尺寸：	24*46mm
產品重量：	20克
材料：	全鋁合金
輸入：	DC 12V-24V
輸出：	5V/2.4A
適用型號：	12V-24V型號

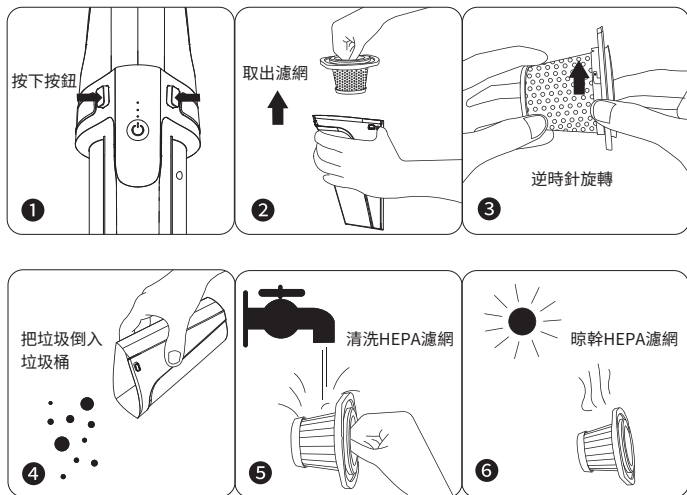
⚠ 注意：

- 不要讓機器與硬物摩擦撞擊，否則可能會導致機器表面磨花或者其他硬件損壞。
- 請使用本機規定的電壓（DC 12V-24V），否則可能會使機器工作異常或損壞。
- 長時間不使用，請將本機脫離點煙器電源。
- 安全起見，請勿跌落、高溫或者在短路情況下使用本產品，請勿將此產品投入火中，請將此產品放置在兒童接觸不到的地方。

清洗方法

1. 同時按下主機兩側塵格開關按鍵，集塵格自動打開。
2. 將濾網從集塵格內取出。
3. 逆時針旋轉濾網，將鋼網和HEPA濾網分離。
4. 將集塵格內的垃圾倒入垃圾桶中。
5. 如有必要，可用微濕的抹布或者一次性紙巾清潔集塵格；濾網可用水進行沖洗。
6. 清洗後須將濾網徹底晾乾才能再次使用。（請勿暴曬）

⚠ 注意：水洗後必須要晾乾燥再裝入集塵格，禁止濾網未晾曬乾燥裝入集塵格，以免濾網水汽引起電機和基板腐蝕。



多重電路保護

過壓保護：當外部充電電壓高於4.2V，會停止充電。

過放保護：當電池耗盡時，風扇轉速降自動降低以保護設備。

過充保護：充電時當電池電壓達到4.25V時，停止充電，防止電池過充而損壞。



此標記表明，本產品不應與其他家庭廢物一起處置。為防止不受控制的廢物處置可能對環境或人類健康造成損害，對其進行負責任的回收，以促進物質資源的可持續再利用。若要退回您的舊設備，請使用返回和收集系統，或聯繫採購此產品的零售商。他們可以把這種產品用於環境安全回收。

產品規格

產品型號：GVC100BK

電源：DC 5V/2A

產品功率：100W

塵杯容量：0.35L

產品尺寸：高*寬*深：35.1*14*10.4 CM

產品尺寸：高*寬*深：111*14 *10.4 CM（包括地拖）

重量：約1.2kg

請記錄下列產品資料

型號 Model No.:

機身編號 Serial No.:

經銷商名稱 Dealer:

購買日期 Date of Purchase:

單據編號 Invoice No.:

本產品不斷改進中，如功能有所更改，恕不另行通知
如有疑問，請與客戶服務中心聯絡。不便之處，敬請原諒。

The product specifications may be changed without prior notice.
Please contact customer service for details if necessary.

說明書內容以英文版本為準

If there is any inconsistency or ambiguity
between the English version and the Chinese version,
the English version shall prevail.

保養登記
Warranty Registration



於網上登記新產品保養
Register your product online
www.dchtoolbox.com

小電維修服務 - 自攜點
Repair Service - Collection Points



客戶服務中心 DCH ToolBox Customer Service Centre
香港九龍灣啟祥道20號大昌行集團大廈4樓
4/F, DCH Building, 20 Kai Cheung Road, Kowloon Bay, Hong Kong

客戶服務熱線 Customer Service Hotline: (852) 8210 8210
電郵地址 E-mail: 8210service@gilman-group.com
網址 Website: www.gilman-group.com