



gemini
ITALY

GEMINI
Dual Voltage Foldable
Multi-functional Kettle
雙電壓折疊式旅行電水壺

MODEL NO.: GTC8TTL



Please read user manual before use, especially the Warning and Caution

WARNING:

1. This appliance is not intended for the use by person (including children under 8 years old), with reduced physical, sensory or mental capabilities or lack of experiences and knowledge unless they have been given initial supervision or instruction concerning use of the appliance by a person responsible for their safety.
2. Please read and comply with the user manual prior to the initial operation of your appliance and keep the user manual for later use.
3. Do not operate the appliance in the way that did not mentioned at the user manual.
4. Before connecting the power, please check the local voltage and select the right voltage by switching the dual voltage switch at the base of the kettle.
 - i. Location for using 220-240V: Hong Kong, Macau, Europe, Russia and southeast Asia countries.
 - ii. Location for using 100-120V: USA, Japan, Taiwan.
(The above voltage data is for reference only. In case of discrepancies found, information from the official announcement of the countries shall be prevailed.)
5. Children shall not play with the appliance, power cord, and its accessories at any time. Cleaning and user maintenance shall not be made by children unless they are older than 8 and supervised.
6. Close adult supervision is necessary when appliance is used by or near children.
7. **The maximum water level is 800ml, never fill the kettle beyond the maximum water level indication since water may be ejected from the spout and cause scalding. Never fill the kettle below the minimum water level indication since the kettle may become boil-dry. Never operate the kettle without water.**
8. Hot steam can be dangerous! When the water is boiled, a lot of hot steam will be emitted from the spout. Keep away from the spout at least 1ft distance for safety. Never put your face and hands close to the spout. At the same time, the lid become very hot, do not direct contact the lid with your hands to avoid scalding.
9. Do not place the polybag in a place where the children can get it. It may cause suffocation if their head are covered by the polybag.
10. Never press, roll, pull, bend, modify the main cord, and Keep the main cord away from heavy items or hot surfaces. Otherwise, the main cord may be damaged and cause fire or electric shock.
11. Power cord should be away from high temperature surface. Stop using the appliance immediately if the power cord or plug is damaged, or it is loose when you insert to the socket. Otherwise, it may result in electric shock,

12. Do not disassemble, repair or modify this product. Failure to do so may result in abnormal operation, electric shock, fire or injury.
13. Never insert or remove the power plug with wet hands. This may cause electric shock
14. Do not move or cover the appliance with any object while it is operating.
15. If the product and any parts are damaged, or malfunction, stop using it and unplug the power plug immediately. For example, abnormal noise or burnt smelling abnormal heat on motor, power cord or plug during operation, stop running suddenly when moving the power cord, please stop using it and unplug the power plug immediately. Contact Customer Service and Repair Centre for the device checking.

CAUTION:

1. Check if the voltage indicated on the appliance corresponds to the local mains voltage before you connect the appliance.
2. Do not use the appliance if the power plug, the mains cord or the appliance itself is damaged to avoid accident. It must be repaired by our service center to avoid a hazard. Never repair, assembly and re-equip by yourself.
3. Do not use extension cords. Never operate with a damaged cord or plug. Use properly grounded electrical outlets only.
4. Place the appliance on a horizontal, even and stable surface. Do not use the appliance under a high humidity or high temperature environment. Never place the appliance under direct sunshine for drying.
5. Do not touch the kettle surface, lid and the hot water. Pick up the kettle by holding the handle only.
6. Do not connect the power supply and turn on the kettle if it is empty.
7. This product is for indoor use only, do not use it for any purposes other than boiling water; add any liquid or food will damage the internal structure of the kettle.
8. Keep the product in a flat surface to avoid leakage or overturn of kettle.
9. To avoid the risk of electric shock, do not immerse the power cord, plug or whole machine into water or other liquids.
10. Stop using the product if the product falls into the water; if it is damaged; if it fails to operate or if the power cord and plug are damaged. Immediately unplug the power plug and notify the customer service and service center
11. Never use scouring pads, abrasive cleaning agents or aggressive liquids such as petrol or acetone to clean the internal and external kettle body, lid, and other accessories.
12. Before moving, cleaning the kettle or after using, unplug the power plug and wait until the kettle is cooled down. After that, moving, storage, installation or removal of accessories can be done to prevent burns.
13. Do not use or place this product in an environment where there is a fire source (gas stove, etc.) or flammable gas. This may cause electric shock or fire. Do not place this product near the heating appliance. Eg. Cooker, Oven. Plastic parts may melt and catch fire.

14. Do not operate the product with upside down position or tilted to one side.
15. Do not give impact or fall the product to avoid accident.
16. Turn the ON/OFF knob anti-clockwise of the kettle to "OFF" and unplug the power plug when installing water, pouring water, cleaning the body and no need to use.
17. Auto-reheat function will be triggered once the water is boiled. Turn the ON/OFF knob anti-clockwise of the kettle to "OFF" and unplug the power plug after boiled, otherwise the kettle will keep reheat function continuously.
18. If the kettle is accidentally switch on if there is absence of water, the anti-boil-dry function will automatically start to protect the kettle. If boil-dry situation happens, kettle is not available for boiling. To resume the operation, fill water into the kettle to cool the heater. Turn off the kettle, unplug the power plug and wait for a few minutes, after that the kettle can be re-operated again.
19. Any problem about the product, please call After-sales service Tel for help.
20. All photos are for reference only.

DESCRIPTION:



1. LID
2. HANDLE LOCK
3. HANDLE
4. ON/OFF KNOB
5. KETTLE BASE

6. POWER CABLE
7. MIN WATER LEVEL(0.2L)
8. MAX WATER LEVEL(0.8L)
9. DUAL VOLTAGE SWITCH

USING METHOD:

Before Use:

1. Remove all packaging.
2. Check if the voltage indicated on the appliance corresponds to the local mains voltage before you connect the appliance. If you use it overseas, please check whether you need to use an additional travel adaptor with the kettle before departure.
3. Fill the kettle to maximum water level of 800ml with a few slices of lemon, and then boil one to two times to clean the kettle. Do not drink the cleaning water.

Note: -Make sure there is no power plug connection when filling the kettle with water.

-The maximum water level is 800ml, never fill the kettle beyond the maximum water level indication since water may be ejected from the spout and cause scalding. Never fill the kettle below the minimum water level indication since the kettle may become boil-dry.

-The anti-boil-dry function will automatically start to protect the kettle. If boil-dry situation happens, kettle is not available for boiling. To resume working, fill water into the kettle to cool the heater. Turn off the kettle, unplug the power plug and wait for a few minutes, after that the kettle can be re-operated again.

-Lid should be covered before boiling. Otherwise, hot water may be split out and cause scalding.

- The temperature control inside the kettle base is very sensitive to the external temperature, so the operation of the kettle may be affected by the external temperature while boiling. It is recommended to use the kettle at normal room temperature (about 20°C). Otherwise, the kettle may stop working before water boiling or keep boiling of water without stopping.

Start to use:

1. Fill in the water into the kettle, place the kettle on a dry and flat surface. Then, insert the power plug into the power socket and turn the ON/OFF knob clockwise to "BOIL". After that, the light indicator on the knob lights up in red and the kettle starts boiling.
2. After boiling, the kettle will stop boiling and the light indicator will turn off. But the kettle is still working, it will change to keep warm mode automatically. When the water temperature drops to about 85%, the keep warm function will be start to re-heat the water. Turn the ON/OFF knob anti-clockwise to "OFF" if you do not need the keep warm function to be on and disconnect the power plug from the power socket.
3. Keeping warm function: Turning the ON/OFF knob clockwise to the position between "OFF" and "BOIL", the kettle start the keep warm function without

boiling of water. When keep warm function is working, the ON/OFF knob lights up red which means the kettle is re-heating the water. If the ON/OFF knob of the light turns off, this means the re-heating of water is stopped, but the kettle is still working and monitoring the water temperature.

The re-heating point of temperature will be depend on the position of the ON/OFF knob (between "OFF" and "BOIL"). When the water temperature drops to a certain temperature range, the kettle will re-heat automatically. If you do not need the keeping warm function, please turn off the kettle completely. Turn the ON/OFF knob anti-clockwise to "OFF"; then unplug the power plug.

4. Turn off the knob (turn the ON/OFF knob anti-clockwise to "OFF") and unplug the power plug from the power socket.

Unfolding method:

When the product is folded, hold the kettle base with one hand and hold the kettle top tightly and pull it up by another hand.

CLEANING AND STORAGE:

While cleaning or carrying out maintenance work:

1. Always turn off and unplug the unit. Cooling down the kettle before starting to clean.
2. Inspect the product before cleaning. If any signs of physical damage are spotted, eg. power cord, plug, kettle body, etc. please contact Customer Service and Repair Centre immediately.
3. Use a soft, damp cloth to wipe the body, and then mop it by a dry cloth. Do not use scaffolding or bead rings or other hard objects brush scraping the kettle inside, the lid and the main body.
4. This product is not waterproof, do not soak it in water, rinse, splash, so as to avoid electric leakage. If the entire product falls into the water or fails to work, please stop using it immediately and contact Customer Service and Repair Centre.
5. If the appliance will not be used for a long time, please clean and dry the product completely and then store it in a cool and dry place.

Descaling:

According to the nature of the supply water, boiled scale deposit may be formed naturally from time to time. It may be found adhered to the Stainless Steel heating plate and may reduce the efficiency of heating. The using frequency of the kettle and the hardness of water decide the amount of boiled scale deposit formed. By following the below descaling methods can remove the boiled scale deposit:

1. Fill in a mixture of ordinary vinegar and water by a ratio of 1 (vinegar) :2 (water) to the "Max" level of the kettle.
2. Stir the mixture and close the lid. Then, start boiling.
3. When boiling is finished, turn the ON/OFF knob to "OFF" and then unplug the power plug. Keep the mixture inside the kettle for 1 hour.
4. Discard the mixture after 1 hour. (Please note that the water is non-drinkable.) Wait until the kettle is cooled and then fill it with water and start boiling again. Discard the boiled water and the descaling procedure is finished. (Please note that the water is non-drinkable.)
5. Repeat the above procedures if boiled scale deposit are still presence.

SPECIFICATION:

Model:	GTC8TTL
Power:	570-820W /680-820W
Voltage:	100-120V~/220-240V~
Frequency:	50/60Hz
Max. Tank Capacity:	800ml
Product Size:	220L*136W*180Hmm(unfold) 165L*136W*8.5Hmm(folded)

Product specifications and design are subject to change without notice.

使用前請先細閱使用說明書，特別是警告及重要事項

警告：

1. 一般電器產品不得由智力有障礙人士、或缺乏經驗和知識者(包括八歲以下兒童)使用，除非有安全責任人在場監督或指導，則可以使用。請務必照看好兒童，確保其不會玩要本產品。在無他人監督的情況下，兒童不得進行清潔及保養。
2. 使用前請仔細閱讀本說明書並嚴格遵守說明書的指引進行操作。閱讀後請保存好說明書作日後參閱。
3. 產品運作時必須有人看管，不要讓小童靠近接觸。
4. 注意!! 注水水位不可超過表面最高水位線“MAX” (800毫升)，以免沸騰時壺嘴噴出熱水或漏水，以防灼傷及損毀產品。最低注水量不要少於最低水位線“MIN”。
5. 如壺中沒有水，請不要乾燒，否則，不銹鋼底盤會變色，多次乾燒會減少水壺的使用壽命。
6. 小心蒸氣高溫！沸騰時高熱的蒸氣會在壺嘴噴出，請與壺嘴保持最少1尺安全距離，切勿將您的手與臉接近壺嘴。同時壺蓋亦會發出高溫，切勿用手直接接觸，以免做成燙傷。
7. 請勿改裝、用力彎曲、捆紮、拉扯、扭擰電源線，或者在電源線上放置重物或放在發熱或高溫表面上，否則可能會使電源線破損、導致火災或觸電；電源線如有受損請立即停止使用。
8. 切勿擅自拆散、修理或改造本產品。否則可能會導致運行異常，引致觸電、火災或受傷。
9. 請勿用濕手接觸電插頭及電源插座。否則可能會導致觸電。
10. 本產品運作時，請勿移動產品或用任何物件遮蓋本產品，以免發生意外。
11. 如產品及任何部件出現破損，故障或失靈時，立即停止使用並拔出電源插頭，以免發生意外。應把機器送到就近的客戶服務及維修中心進行檢測與維修。
12. 拔插頭時，不可用力拉電源線，應拔插頭。

重要事項：

1. 連接電源之前，請檢查本地的電源電壓是否與產品所標示的電壓相符。
2. 請勿使用延長線或外置計時器，切勿使用損壞的電線或插頭。請使用帶接地的電源插座。
3. 產品必須放置在平穩的表面上使用。
4. 請勿用手直接接觸發燙的水壺表面，壺蓋或熱水。熱水煲滾後，如要移動水壺，必須使用手柄進行。
5. 水壺未加水前，請勿連接電源及啟動本機。
6. 本產品僅供室內煲水使用，請勿將本產品用於煲水以外的其它用途；加入其他液體或食物會污染或破壞電水壺內部。
7. 為避免觸電風險，請勿把電源線，插頭或者整部機器浸泡在水中或者其他液體裡。
8. 如果機器落入水中，損壞，出現故障或電源線和插頭出現損壞，請勿使用本機，立即拔掉電源插頭並通知客戶服務及維修中心。
9. 清潔時，請勿用百潔布或鋼絲圈等硬物刷刮不銹鋼機身及不銹鋼機身內的部件。
10. 請勿在有明火火源、有可燃氣體的環境、在易燃物附近或發熱電器旁邊使用本產品，例如煤氣爐、烤箱、電爐、等。否則塑膠部件可能溶化而起火。
11. 不要對產品進行衝擊及摔落，以免造成產品破壞及發生意外。
12. 在裝水、倒水、清洗機身及不需要使用時要關掉電水壺開關及拔走電源插頭。
13. 本產品具有自動保溫功能，如不需要這功能，請於水滾後關掉電源並拔走電源插頭，以免自動保溫時重複沸騰水。
14. 如意外地在無水時啟動了熱水壺，防乾燒安全裝置將會自動啟動，以保護熱水壺。要恢復運作，可加水入熱水壺，以冷卻發熱器，等待數分鐘左右，熱水壺便可重新操作。
15. 所有圖片只供參考，一切以實物為準。

產品指示圖：



1. 壺嘴
2. 壺蓋
3. 折疊手柄按鈕
4. 手柄
5. 調溫旋鈕

6. 水壺底座
7. 最低水位線 "MIN"
8. 最高水位線 "MAX"
9. 電壓切換開關

使用方法：

使用前：

1. 拆除所有包裝。
2. 連接電源之前，請檢查本地的電源電壓是否與產品所標示的電壓相符。如在外地使用，請於出發前檢查是否需要加配合適的旅行插頭使用。
3. 第一次使用時，注入清水至最高水位線“MAX”，把水燒開後把水倒掉，用清水沖洗，重複一至二寸，以清除生產、存儲過程中有可能產生的灰塵。

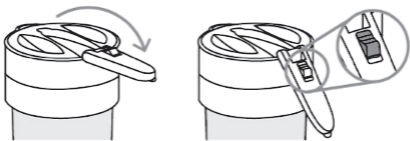
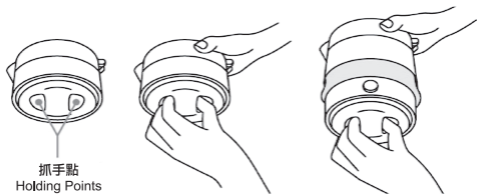
注意：

- 裝水或加水時請不要接電源。
- 注入清水時水位不能多過最高水位線“MAX”，以免煲水時熱水會彈出或溢出；同時水位不能少於最低水位線“MIN”，以免出現乾燒情況。
- 本機設有防乾燒保護，當水壺處於乾燒狀態時，本機會自動切斷供電。如此保護一旦啟動，水壺會暫時不能使用。此時，應關掉開關旋鈕及拔出電源插頭，加水入電水壺中，待水壺冷卻數分鐘左右，才能重新正常使用。
- 必須蓋好蓋子後才可以進行煲水，以免煲水時熱水會彈出或溢出。

使用方法：

1. 將底部電壓選擇開關旋到匹配的電壓（順時針轉到底為AC100-120V,逆時針為AC220-240V），打開壺蓋，注入清水（注水不能超過最大水位或低於最小水位），合上壺蓋後插上電源插頭。如果電壓不匹配將會損壞電水壺或燒水極慢。（出廠設置為AC220-240V位置）
2. 將旋鈕指示順時針方向到最大（BOIL）位置，指示燈亮，開始加熱，水滾後，水壺會自動停止工作，開關旋鈕的指示燈會熄滅；但此時電水壺並未關機並進入自動保溫狀態。當水溫下降至大約85°C左右，便會再次加熱保溫。如不需要自動保溫功能，就要完全關掉電水壺，請把開關旋鈕以逆時針方向轉至“OFF”；再拔掉電源插頭。
3. 自動保溫功能：如把開關旋鈕旋轉至“OFF”及“BOIL”之間的位置，即處於“KEEP WARM”位置，水壺只會啟動自動保溫功能，但不會煲水至水滾。自動保溫功能啟動其間，如旋鈕的指示燈亮起紅光，代表水壺開始加熱保溫。如旋鈕的指示燈沒有亮紅光，代表水壺停止加熱保溫，自動保溫功能會因應旋鈕的位置的不一樣，水溫也會不一樣，大致在40-85度區間（45度的水溫適合沖奶粉，泡蜂蜜；80度左右的水適合泡綠茶，沖咖啡），當水溫下降至某溫度範圍時，水壺會自動加熱保溫。如不需要自動加熱保溫，就要完全關掉電水壺，請把開關旋鈕以逆時針方向轉至“OFF”；再拔掉電源插頭。
4. 倒水前必須關機（把開關旋鈕轉至“OFF”）及拔掉電源插頭。
5. 展開方法：產品折疊時，先單手按住壺底，另一手緊握手柄，然後向上拉起便可。

折疊方法：
FOLDING METHOD:



清潔和保養：

在維護和保養時請確保：

1. 進行清潔前，請先將電源插頭從電源插座中拔出，待產品完全冷卻後才可進行清潔。手濕時，不要插拔電源線，以免發生危險。
2. 檢查產品是否損壞，包括電源線、外殼和加熱器。如果發現任何損壞的跡象，請立即聯絡客戶服務及維修中心。
3. 使用微濕軟布擦拭機身，再用乾布完全抹乾。請勿用百潔布或鋼絲圈等硬物刷刮內膽、壺蓋及主機身。
4. 本產品並不防水，請勿浸泡在水中、沖洗、灑水，以免引起漏電發生意外。如果整部產品掉入水中或出現故障，請停止使用並立即聯絡客戶服務及維修中心。
5. 如長時間不使用，請先清潔好，把產品完全抹乾後放置在乾燥陰涼的地方收藏。

清除水漬污垢：

由於水質的影響，在水加熱過程中會產生碳酸鈣氧化物，較輕的浮於水面形成浮沫，較重的沉澱壺底結成水垢。水垢的存在會增大燒水共鳴音量，也會延長燒水時間，必須定期使用檸檬酸除垢劑清理，也可使用食醋（最好是白醋），方法如下

1. 將電水壺以1：2的比例注入食用醋及清水至最高水位線“MAX”。
2. 輕輕攪拌，蓋緊壺蓋，開始進行煲水。
3. 沸騰後把開關旋鈕以逆時針方向轉至“OFF”，再拔掉電源插頭，放置一晚，第二天把溶液倒去，再用清水燒開清洗即可。
4. 如仍有污垢時，請重複食用醋清洗動作。

產品規格：

型號： GTC8TTL

功率： 570-820W/680-820W

電壓： 100-120V~/220-240V~

頻率： 50/60Hz~

容量： 800ml

產品尺寸： 220(L) x 136(W) x 180(H) mm (展開壺身)，

165(L) x 136(W) x 85(H) mm (折疊壺身)

售後服務

本電水壺自購買日起提供一年保修服務。在家庭正常使用情況下，非人為導致的損耗，請聯繫銷售商辦理檢測維修。

下列情況之一者，不屬於保修範圍：

由於沒有按照說明書上的要求操作而造成的故障。

由於跌落、碰撞等人為造成的故障。

由於自行拆裝、修理造成的故障。

由於誤用、亂用、故意損壞而造成的故障

商業用於上造成的變色、擦傷、積垢或過熱損壞等所造成的故障。

請記錄下列產品資料

- 型號 _____
- 機身編號 _____
- 經銷商名稱 _____
- 購買日期 _____

本產品不斷改進中，如功能有所更改，恕不另行通知，如有疑問，請與客戶服務中心聯絡，不便之處，敬請原諒。

說明書內容以英文版本為準

ToolBox Customer Service Centre 客戶服務中心：
4/F, DCH Building, 20 Kai Cheung Road, Kowloon Bay, Hong Kong
香港九龍灣啟祥道20號大昌行集團大廈4樓

Customer Service Hotline 客戶服務熱線：(852) 8210 8210
Service E-mail 電郵地址：8210service@gilman-group.com
Please register now at 請即上網登記：www.toolbox.hk
Website 網址：www.gilman-group.com



Proudly Serviced by:



太平家庭電器