

gemini
ITALY

Multi-functional Baby Pot
嬰兒粥湯煲
Model No.型號：GSC250
250-300W

Before using your product for first time, please read this instruction manual.
在使用本產品前，請仔細閱讀本說明書並保存好。

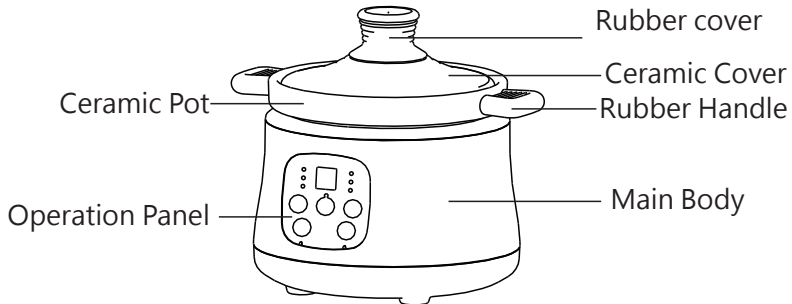
SAFETY INTRUCTIONS

1. Please read these instructions carefully and retain them for reference.
2. This appliance is not intended for use by persons (including children under 8 years old) with reduced physical, sensory or mental capabilities, or lack of experience and knowledge, unless they have been given supervision or instruction concerning use of the appliance by a person responsible for their safety. Children should be supervised to ensure that they do not play with the appliance.
3. All the repairs carried out solely by a qualified electrician. Never try to repair the appliance yourself.
4. Use this appliance solely in accordance with these instructions.
5. Never use the appliance at outdoors or in a humid room.
6. Before start use, ensure the power supply same as indicate at the appliances. The power supply should has earth wired.
7. Appliances should place at a stable platform, and keep away from children.
8. When power cable damages, please contact service center for replacement. Do not replace it by own.
9. While selecting the features, do not press the button with great force, it will damage the button and control panel.
10. Any faulty operation, must switch off power and unplug the power supply. Do not unplug while your hand is wet, because will get electric shock.
11. Do not pull the line along sharp object / sharp edges, crimp the wire or let it hang down. Also put away from hot heating and wet condition.
12. Do not insert any metal object into to the heat dissipation holes / gaps, otherwise it cause electric shock.
13. Do not place the product on the surface or beside extreme heat condition, such as oven.
14. It is forbidden to use this product on an unstable / inclined platform to avoid accident such as injury or fire cause by products falling over.

- 15.Keep away from children or in-experienced person to operate this product.
- 16.While in process, it is normal that the pot body is hot when pouring water or soup out, please lift the pot by holding the handle. Do not touch the pot body with hands directly, this would get hurt.
- 17.Please keep the surface of the heating plate clean. After using it for a period of time, please clean the dirt on the surface of the heating plate.
- 18.The product will generate steam when it is working. It is easy to cause burns from the steam port. Please be careful while using it.
- 19.Do not allow liquid to flow into the product during cleaning, and to avoid danger do not allow the power cord, plug, main body, etc. to dip in the water.
- 20.The ceramic container is specially designed ONLY for this product and cannot be used on a naked flame.

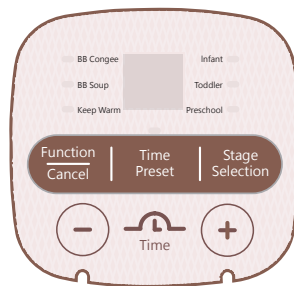
PRODUCT REVIEW

This unit is for HOUSEHOLD USE ONLY



Note : The pictures are for reference only, assemblies maybe different from the picture.

PANEL INSTRUCTION

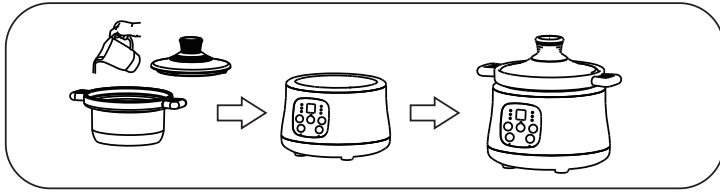


1. Function / Cancel button: In the standby mode, press this key to select the corresponding functions in sequence : BB Congee, BB Soup, Keep Warm, after selecting function, the corresponding indicator light flashes, the panel will display the default working time, and if no other operation is performed, it will automatically operate after 10 seconds (After 10 flashes), the function indicator light becomes steadily ; Press this button during process, the product will stop operating, the panel displays "OF", and returns to the standby mode.

2. Stage Selection button: After selecting "BB Congee" or "BB Soup" function, press this button to select individual phase in sequence, the corresponding indicator light flashes, and the panel displays its default working time. If there is no other further selection, it will automatically operate after 10 seconds (After 10 flashes), the function display light becomes permanently on; If do not press this key, the process for "BB Congee" or "BB Soup" defaults to the Infant Stage.
3. Time Setting button: Press the "+" , "-" button to adjust the reserved working time of each function. Each time you press the "+" or "-" button, the reservation time is increased or decreased by 0.5 hours; while for the function time or keep warm function is increased or decreased by 0.1 hours.
4. Preset button : In standby mode, press this button to enter the preset setting. The preset indicator flashes, the panel displays the default time "2:00", press "+" , "-" button to adjust the time, after set the preset time, press the "function / cancel" key to select the desired function. (The preset time available is from 0.5 - 9.5 hours) At this time, the reservation indicator light is always on. After 10 seconds (After 10 flashes), the product will automatically enter the preset countdown. If only the reservation time is set, and without any function selection within 10 seconds (After 10 flashes), the reservation function will be automatically cancelled and the product will return to standby mode. When the function is selected, press the "Preset" button to enter the reservation setting. At this time, the function indicator is always on. Press the "Preset" button again to cancel the reservation and return to the process stage selection.

OPERATION METHOD

1. According to different cooking requirements, ingredient processing and preparation will be different : Put all ingredients that need to be stewed into a ceramic pot and add an appropriate amount of water then cover with the lid, and put into the mainbody. (As shown below).



Tips:

- To cook congee, the recommended ratio of rice to water is 1:14.
- The total amount of water and ingredients should not exceed the max level of the ceramic pot to avoid overflow during stewing.
- It is suggested to stir the congee regularly to avoid stewing.
- Put the ceramic pot into the main body, make sure it is in place and before power on.

2.Preset settings:

- Turn on the power, the product enters the standby mode, the panel displays "OF" .
- Press the "Preset" button, the product enters the preset mode, the panel displays the default PRESET time at 2:00 hours, then press the "+" , "-" keys to adjust the PRESET time.

Tips:

- Do not set long PRESET time for those ingredients are spoilage easily or during the season is hot and humid, to avoid spoilage of the ingredients.
- You can make preset settings after selecting the features.
- Product process time = Preset time + feature program time.

Example: Soup needs to be cooked for 4 hours. If you want to have soup after 7 hours, then you need to set the PRESET time to 3 hours and the "Soup" program setting time to 4 hours.

Reference Cooking Time of Each Function

Feature/Stages		Default Cooking time(hr)	Max Cooking Time(hr)	Min Cooking Time(hr)
BB Congee	Infant Stage	2.5	3.5	0.5
	Toddler Stage	2.4	3.5	0.5
	Preschool Stage	2.3	3.5	0.5
BB Soup	Infant Stage	3.0	5.0	0.5
	Toddler Stage	3.5	5.0	0.5
	Preschool Stage	4.0	5.0	0.5
Keep Warm		/	8.0	/

Tips:

- Different ingredients have different stewing times, please set according to the actual condition.
- Different features have different heating procedures, please select the appropriate features according to the ingredients.
- If the preset has been set, keep warm function cannot be selected.
- If you do not want to preset, you can directly press the "Function / Cancel" button to skip the preset setting operation.
- Stages cannot be selected in Keep Warm Function.
- When lifting the ceramic pot during the stewing process, the product will stop heating, the panel will display "00" and flash; if the ceramic pot is not put back within 10 minutes, the product will return standby mode automatically.

Status after cooking is completed

After the stewing process is completed, press the "Function / Cancel" button, the panel displays "OF", the indicator light is off; if you do not press the "Function / Cancel" button, the product will beep, and enter to keep warm function automatically. At this time, the keep warm indicator light always turns on, and the panel displays the keep warm time.

1. Before cleaning and maintenance, please be sure to unplug the power plug and wait for the main body to cool down before cleaning. Do not use steel wool to clean the ceramic pot.
2. Wipe the inner surface with a soft cloth or sponge. After wiping it clean, make sure no liquid remains. Do not wash it with water directly
3. Do not wipe with lacquer thinner, gasoline, detergent powder, hard brush or steel wool, etc., to avoid damage the surface.
4. Do not put the whole unit in water for washing. The outer part of the product can be wiped with wet towel, and must not be washed with water to avoid leakage and malfunction.
5. When using ceramic products, please handle them lightly to lengthen the lifespan.
6. When the product is not used, please clean and dry it, pack it in the box, and put it in a ventilated and dry place to prevent moisture from affecting the performance of the products.

FREQUENTLY ASKED QUESTION

1. The panel has no display and the product cannot be used normally:
 - Whether there is a power shortage
 - Whether the power plug is plug-in
 - Whether the power socket is turned off
 - The power cord is install at the product, whether well connected to the main body.
2. The food is not well cooked:
 - Whether the stewing time is too short

SPECIFICATIONS

Model No.: GSC250

Mains Voltage & Frequency: 220-240V~ 50-60Hz

Power: 250-300W

Capacity: 0.8 liters Max.

Product Dimension: 236(W) x 200(H) x205(D) mm (With ceramic pot)

***The final product specification may be varied according to a different lot of material and actual input voltage power of the usage area.**

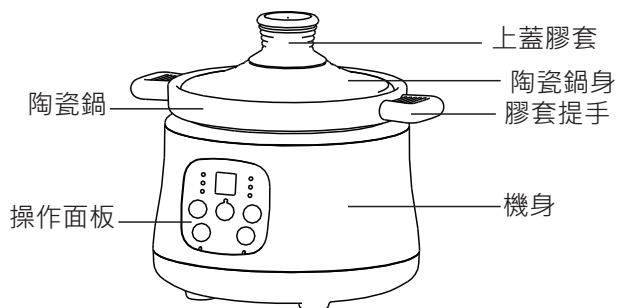
安全指引

1. 請於操作前詳閱操作指引,避免使用不當而造成損壞或危險。
2. 8歲以下兒童、傷健人仕、精神及感官受到影響及缺乏操作常識和經驗者，不適宜獨立操作此產品。如需操作需要有相關人仕從旁指引及對其行為安全負責。
3. 如電陶瓷鍋出現問題，請聯絡代理商或合資格人仕處理，不要自行進行維修以免發生危險。
4. 請遵循從電陶瓷鍋上的規格表資料連接電源。
5. 此電陶瓷鍋只適用於家居室內操作，並不適用於商業用途及不要在濕度高的室間內使用。
6. 使用前請確保插座的接地有效，同時請確認輸入電壓為220-240V~50-60Hz。
7. 如電源線損壞時，請聯絡維修部安排更換。
8. 操作按鍵時不可用力過猛,以防按鍵損壞。
9. 在使用過程中，若發生問題時，請先將電源插頭從插座上拔下；請勿濕手拔/插插頭，以免觸電。
10. 請勿以尖端物或鋒利邊沿來壓住電線或讓它懸垂下來，同時要遠離熱源和濕透的地方。
11. 不要將金屬等異物插入散熱孔或間隙中，否則可能導致電路損壞。
12. 切勿將本產品放置在發熱的表面上或旁邊，如焗爐。
13. 禁止放置在不平或傾斜的枱面上使用本產品,避免產品容易傾倒引起傷害或火災等事故。
14. 不要在地毯、塑膠凳這些不耐熱的表面或者附近使用，會因蒸氣受損的物品不要放置在本產品上方。
15. 本產品不適用於兒童、精神病患者或缺乏經驗的人使用或玩耍本產品。
16. 產品使用過程中，其鍋身變熱是一種正常現象,當倒水時，請拿起手柄來提起鍋身，切勿用手接觸鍋身的高溫表面，以免燙傷。
17. 若產品出現乾燒情況，冷卻後請往陶瓷鍋內加水或拔掉電源,切勿觸摸發熱體以防燙傷。
18. 請保持機器發熱盤表面清潔,使用一段時間後，需清理發熱盤表面的污垢。
19. 產品使用時，會產生蒸氣從蒸氣口噴出，這容易引起燙傷，請務必小心。
20. 清洗時請勿讓液體流入產品內部，也不可將電源線、插頭、整機等浸入液體裏，以免發生危險。

21.陶瓷容器僅限於本產品使用，不能直接放在明火上烹煮食物!

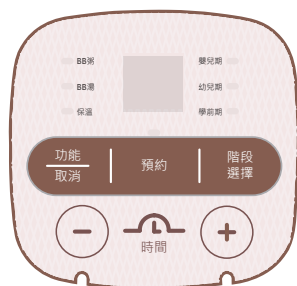
注意! 此產品只適合家庭用途。

部件示意圖



注意:如產品圖片與實物略有不同，請以實物為準。

控制面板



"功能 / 取消"鍵：在待機狀態下，按此鍵可依次選擇相應的功能：BB粥、BB湯、保溫。選定好功能後，對應指示燈閃亮，顯示屏顯示其預設工作時間，若無其他操作，10秒後(閃亮10次後)自動進入工作狀態，功能指示燈變為常亮；工作過程中按此鍵，本機會停止工作，顯示屏顯示"OF"，回到待機狀態。

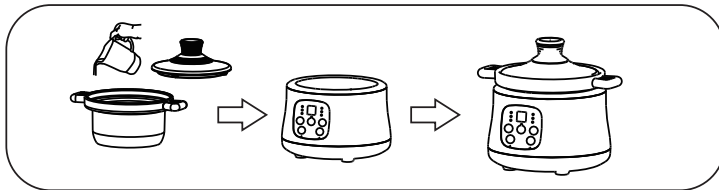
"階段選擇"鍵：在選好"BB粥"或"BB湯"功能後，按此鍵可依次選擇相應的階段，對應指示燈閃亮，顯示屏顯示其預設工作時間，若無其他操作10秒(閃亮10次後)後自動進入工作狀態，功能指示燈變為常亮；若不按此鍵，"BB粥"或"BB湯"功能默認為嬰兒階段。

時間調節鍵：按"+"、"- "鍵可調節各功能及預約的工作時間，每按動一下"+"或"- "鍵，預約對應時間以0.5小時遞增或遞減，功能時間以0.1小時（保溫功能以1小時）遞增或遞減。（時間調節範圍為0.5 - 9.5小時）

預約鍵：在待機狀態下，按此鍵進入預約設置，預約指示燈閃亮，顯示屏顯示默認預約時間"2:00"，按"+"及"- "鍵可調節預約時間，設定好預約時間後，按"功能 / 取消"鍵選擇所需功能，此時預約指示燈長亮，設置好10秒後（閃亮10次後）本機自動進入預約倒計時。若只進行預約時間設定，無任何操作10秒後（閃亮10次後），預約功能自動取消，本機進入待機狀態；當選擇好功能後，按"預約"鍵進入預約設置，此時對應的功能指示燈長亮，再次按"預約"鍵則取消預約，回到所選工作模式。

使用方法

1. 根據不同的烹煮要求，進行食材處理及相關準備將需要燉煮的各類食材放入陶瓷鍋內並加入適量的水（以恰好覆蓋食材或略多一點為宜），蓋上陶瓷鍋蓋，再放入本機中。（如下圖）



溫馨提示：

- 燉煮粥時，建議米和水的比例為1:14。
- 水和食材的加入量不能超過陶瓷鍋內的臺階，以免燉煮時溢出。
- 燉煮粥時，建議定時攪拌一下，以免煮糊。
- 陶瓷鍋編放入本機中，須確保放置到位再啟動通電工作。

2. 預約設置

- ① 接通電源，本機進入待機狀態，顯示屏顯示"OF"。
- ② 按"預約"鍵，本機進入預約設置狀態，顯示屏顯示預設預約時間2:00小時，此時按"+"、鍵可以調節預約設置時間。（最高設定時間為9.5小時）

溫馨提示:

- 容易變質的食材或天氣炎熱時，不要設定長時間預約，避免食材變質。
- 可以在選擇好功能後再進行預約設置。
- 本機工作時間=預約時間+功能工作時間。

例：煲湯需要燉煮4小時，假設希望7小時後可以喝到燉好的湯，那麼需將預約時間設置為3小時，煲湯程式 設定時間為4小時。

3.功能選擇

按"功能/取消"鍵，選擇所需功能，此時對應功能指示燈閃亮，顯示屏顯示對應功能的默認工作時間，此時按"+"、鍵可以對工作時間進行調節，確認好後 10秒鐘本機自動進入工作狀態。

各功能烹飪時間參考表

功能/階段		默認工作時間 (小時)	最大工作時間 (小時)	最小工作時間 (小時)
BB粥	嬰兒期	2.5	3.5	0.5
	幼兒期	2.4	3.5	0.5
	學前期	2.3	3.5	0.5
BB湯	嬰兒期	3.0	5.0	0.5
	幼兒期	3.5	5.0	0.5
	學前期	4.0	5.0	0.5
保溫		/	8.0	/

溫馨提示.

- 不同種類食物燉煮時間有所不同，請根據實際情況進行調整。
- 不同功能加熱程式不一樣，請根據食材選取合適的功能。
- 如已進行預約設置，則保溫功能不可選擇。
- 如不需要預約時，可直接按"功能/取消"鍵，跳過預約設置操作。
- "保溫"功能不能進行階段選擇。

- 燉煮過程中提起陶瓷鍋，本機停止加熱，顯示屏顯示"00"並閃爍，如一分鐘內不將陶瓷鍋放回，本機自動進入待機狀態。

4. 工作完成後狀態

燉煮工作完成後，按"功能/取消"鍵，顯示屏顯示"OF"，指示燈熄滅；不按"功能/取消"鍵，本機發出Di...提示聲，本機自動進入保溫功能，此時保溫功能指示燈常亮，顯示屏顯示保溫時間。

保養和維護

1. 使用完畢後，請及時從電源插座上拔下插頭。
2. 各部件可用洗潔精和海綿清洗，請勿使用硬質鋼絲清洗，以免破壞表面。
3. 鍋身水垢的清除方法，倒入20毫升的白醋在陶瓷鍋上浸泡15到20分鐘，再用清水沖洗即可。
4. 切勿將主機浸入水中，產品外表面僅可用濕毛巾擦拭，不得用水清洗，以免發生漏電及發生故障。
5. 使用或移動電熱鍋時，需輕拿輕放，嚴禁帶電移動電熱鍋。
6. 產品長時間不使用時，請清潔乾淨，裝入包裝箱中，置於通風乾燥的地方，以免受潮，影響使用。

常見問題

1. 顯示屏無顯示，本機不能正常使用:
 - a. 是否停電？
 - b. 電源插頭是否插好？
 - c. 電源插座是否處於關閉狀態？
 - d. 電源線尾插與機身插座是否連接插緊？
2. 食物沒有燉熟:
 - a. 燉煮時間是否太短？
 - b. 所選功能是否正確？

注意：

經以上現象分析後仍無法排除故障，請與本公司維修中心點 或經銷商聯繫，嚴禁非專業人員對本機自行拆裝。

產品規格

型號：GSC250

電壓：220-240V~

頻率：50-60Hz

功率：250-300W

容量：0.8公升 (最大)

產品尺寸: 236(闊) x 200(高) x 205(深) 毫米 (含陶瓷內膽)

*相關產品的規格，可能會因配件批次或實際使用地區的電壓差異而有所不同。

請記錄下列產品資料

● 型號

● 機身編號

● 經銷商名稱

● 購買日期

本產品不斷改進中，如功能有所更改，恕不另行通知，如有疑問，請與客戶服務中心聯絡，不便之處，敬請原諒。

說明書內容以英文版本為準

ToolBox Customer Service Centre 客戶服務中心：
4/F, DCH Building, 20 Kai Cheung Road, Kowloon Bay, Hong Kong
香港九龍灣啓祥道20號大昌行集團大廈4樓

Customer Service Hotline 客戶服務熱線：(852) 8210 8210

Service E-mail 電郵地址：8210service@gilman-group.com

Please register now at 請即上網登記：www.toolbox.hk

Website 網址：www.gilman-group.com



Proudly Serviced by:



太平家庭電器

订单号： BE2348

注：以下内容为审核专用，非印刷内容，请须知！

变更简要说明：		小熊电器股份有限公司	
设计	林延施	图号	DSG-B08K1(GSC250)-45-08
(校对) 业务	徐嘉宝/陈敏珠	物料名称	GSC250 说明书
(校对) 项目工程师	陆汉英	物料编码	4084100001168
批准	陈智秒	图纸版本	A 版
日期	2021年04月20日		