

**geminipro**  
ITALY

陶瓷釉內膽小型電飯煲（0.6公升，1-3人用）

CERAMIC GLAZE INNER POT COMPACT RICE COOKER

(0.6L)

MODEL NO./型號：GRC6BK

Before using your product for first time, please read this instruction manual.  
在使用本產品前，請仔細閱讀本說明書並保存好。

## **IMPORTANT SAFETY INSTRUCTIONS**

**When using this appliance, basic precautions should always be followed including the following:**

**Read all instructions before use:**

1. This product is only for home use, not for outdoor.
2. Remove the product from the outlet to the "off " mode before unplugging the plug from the outlet. Do not use the way to pull the power cord to unplug the plug, should be hold the plug and remove it from the socket. Do not pull down the plug directly from the socket by pressing the rewinding system directly. Remove the plug from the socket by hand and then retract the wire.
3. Do not allow the wires to touch the hot surface. Before removing and cleaning, the product must be completely cooled.
4. When not in use, be sure to unplug the power plug from the power outlet.
5. If the power cord is damaged, please stop using the product immediately. In order to avoid electric shock, do not disassemble and reassemble. If any damage, please carry it to our maintenance center. Unauthorized repair / modification or product for non-product design, purposes warranty will not provide
6. Children should be supervised to make sure they don't play with the device.
7. Touch hot metal parts or steam may burn.
8. Don't touch the inside of the product while it is in operation.
9. Home appliances should not use an additional timer or independent Trent control systemperation.
10. The power cord should not be hung from the edge of the table or in contact with hot surfaces. In case of damage to the power cord.
11. This product should not be placed next to objects with high temperature.
12. Warning: If the control panel deform , please stop using the product immediately to avoid electric shock.
13. After the inner pot is washed,wipe it with a dry cloth to put it into the rice cooker.
14. The bottom of the inner pot should avoid collision to prevent deformation, and other containers should not be used instead of the inner pot. The inner pot and the heating plate should be kept clean to avoid damage.
15. The inner pot can be cleaned with water. Do not rinse the rice cooker directly with water, or immerse the product in water/other liquids to avoid fire, electric leakage or life safety.
16. When the product is working, it cannot be moved.
17. When cooking, do not cover the venting opening with a cloth or any foreign matter otherwise it will be prone to malfunction.
18. When cooking the rice, do not touch the product, excluding the handle. Do not approach the steam vent to prevent burns.
19. Please use plastic or wooden rice spoon, do not use metal rice spoon to avoid damage to the inner pot surface coating.
20. During the cooking process, after the switch button automatically jumps, do not force the button to be pressed to avoid damaging the rice cooker.

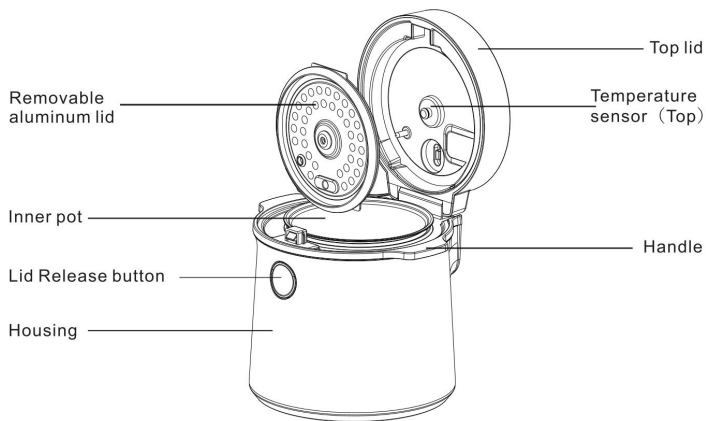
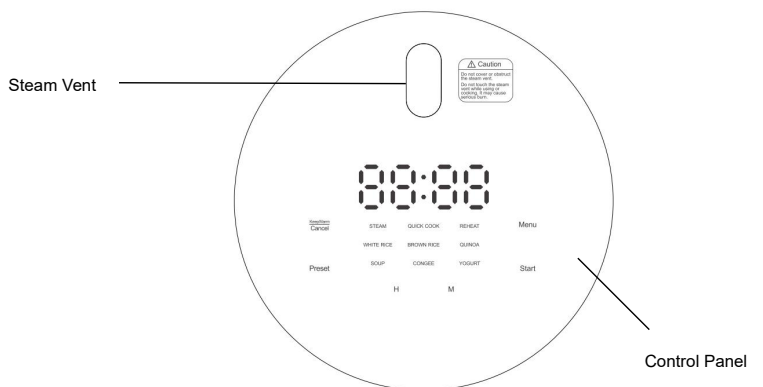
21. Children over 8 years old, persons with weak body, sense, intelligence, inexperience and knowledge can use this machine after they have been given instructions on how to use it safely and are aware of possible dangers. Children should not play with this product cleaning and maintenance can not be handled by children.
22. When first time to use this appliance, a slightly smell and white smoke may be emitted. It is normal status. Please ensure sufficient ventilation, those smell and white smoke will disappear quickly.

**Special statement:**

1. To avoid overloading the circuit, do not operate the other on the same circuit.
2. If the extension cord is necessary, use a 13 amp cable. A smaller current than this product may cause overheating and short circuit.
3. Please keep this manual for future reference.
4. Do not allow children or untrained personnel to use the product without supervision.
5. Do not immerse the product, power cord, or plug in any liquid. Doing so may cause electric shock or fire.
6. When the product is not in use, disconnect the plug from the power supply.
7. Do not touch the product with wet hands.
8. Do not expose the product to outdoor (rain or under the sun).
9. After inserting the plug into the socket and opening it, make sure that the qualified personnel supervise the use of the product.
10. Before using this product, remove all packaging materials.
11. After unpacking, check for damage and there are no missing parts.
12. All packaging materials, such as plastic bags, poly foam, tape, etc. should be placed in places where children are not exposed, because improper use of these materials will lead to child suffocation, and even death.
13. Use only the parts provided in the product and in the packaging, otherwise it may pose a hazard to the user and may damage the product.
14. Before using the product, please check the product rating label on the power, voltage is consistent. The rating label is attached to the back of the product. If you have any questions, please contact our customer service department for assistance.
15. Do not allow the power cord to touch a sharp edge or hot surface during operation.
16. This product is not a toy, cannot be used directly into the people and animals, otherwise it will be burned.
17. This product cannot be used in unstable locations or burning objects, otherwise it is likely to cause a fire or burn.
18. Parts are not included in the warranty, if you need to be replaced, must be purchased with my company. Parts are not necessarily available, it may take some time to replace.
19. This product is for home use only and should not be used for any commercial purpose.
20. Please must clean the product and kill all the insects before sent to our repair center otherwise our company will charge extra cost for cleaning and pest control.
21. You may notice an odour & gas using the appliance for the first time, use to the insulation material. This is harmless and will subside quickly.

22. Do not use this product near an open flame, on or near the surface of heat-resistant objects such as carpets and plastics. Keep combustible materials away at least 1.5m from the cooker. Do not place the items that are susceptible to steam on top of this product.
23. Do not connect and pull the power cord with wet hands, otherwise it may cause a short circuit or electric shock.
24. When the cooker is in use, hot vapor will emit from top of the vent. Please do not get close or touch the steaming valve when cooking. Do not cover the steaming valve at all times during cooking.
25. Do not leave the unit while it is in operation.
26. Do not use sharp or abrasive items in contact with the inner pot as this will damage the non-stick coating.
27. Do not use extension power cord with other electrical appliance, use wall socket only.
28. Always grasp the plug to disconnect the unit from the power source. Do not pull the cord.
29. Ensure cooking with care, the pot and its outer surface are dried with clean dry cloth before cooking.
30. Please follow the instruction of cooking stated in this manual. Please ensure the content does not exceed the maximum water line engraved inside the cooking pot.
31. This inner pot must be used with the cooker. Please do not use the inner pot with other cooking device. The inner pot should not be used direct on stove.
32. This product is not intended to use by persons (including children) with weak physical condition, slow reaction, mental retardation, lack of experience and common sense, unless they are under supervision or instruction by the person who is responsible for their safety.
33. To avoid danger of electric shock, unplug from outlet when not in use and before cleaning.
34. Regularly check the power cord of this product. If the power cord is damaged, it must be replaced by our after-sales service department or qualified electrician to avoid danger.
35. Do not use accessories that are not supplied with this unit to avoid danger and injury.
36. There is a "warm reminder" message on the product, please pay attention to it before use.
37. Switch the cooker off immediately when the digital touch control panel was touched by mistake, or it will cause dry cooking.
38. Do not put any item or food into the inner pot for storage purpose.
39. This product is not a toy, please do not let children to play with it.
40. Do not wet the heating tray of the main machine.
41. If switch on the cooker with no filled water in the inner pot by mistake, there will be high temperature protection and it will not work. when the top temperature exceeds 105°C or bottom temperature exceeds 165 °C , the cooker will switch to keep warm mode automatically.

## PARTS AND FEATURES



### Accessories:



Rice scoop



Measuring Cup

### USER'S GUIDANCE:

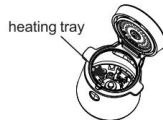
1. Remove all packaging materials and promotion labels.
2. Make sure the electricity supply is 220-240V;50Hz -60Hz.
3. Plug the unit into the wall power outlet, then heard a beep signal and there is an indicator "---"display on the control panel ,the unit is now ready for use.
4. Wash the plastic accessories thoroughly.
5. Remove the inner cooking pot from rice cooker and clean with warm, soapy water. Rinse and dry thoroughly before placing into the cooker.
6. Wipe body clean with a damp cloth.

**NOTE:** The unit must not be connected to power outlet before and during cleaning. Make sure the power cord unplugged.

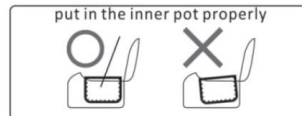
### The steps are as follows:

1. Read the instructions and follow the prompts.
2. Please remove all the packing materials before use.
3. Open the cooker by pressing the lid release button.
4. Make sure there are no objects between the inner pot and the heating or tray.
5. Place the inner pot into the cooker, make sure that the inner pot is properly installed.

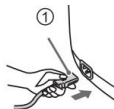
wipe clean the outer and edge of inner pot with clean soft cloth



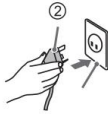
put in the inner pot properly



6. Keep it away from the wall, do not put the unit near flammable materials, power socket and cooking stove.
7. Prepare the ingredients. Please do not overfill the cooking pot.
8. Plug in the connector to the appliance inlet on the housing first. (Fig.1)



9. Connect the cord plug to the power source.(Fig. 2)



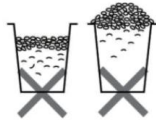
10. Select the programs under the section of the “PROGRAM SELECTION AND SETTING” section below.
11. Press the “START” button to start the cooking operation.

**IMPORTANT NOTES:**

1. After every use, you must clean the inner pot with mild detergent and rinse thoroughly with tap water.
2. Use the measuring cup correctly and do not rinse rice or food ingredients inside the inner pot, it may cause damage on the non-stick coating.



Correct use of measuring



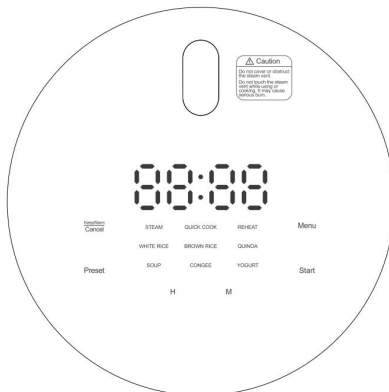
Incorrect use of measuring



Do not rinse rice or food ingredients inside the inner pot.

3. Make sure the content does not exceed the indicator water line inside the pot.
4. Dry and turn the inner pot slowly to let it fit the outer housing well.

**FUNCTION REVIEW**






## PROGRAM SELECTION

Please select the functions on the touch screen control panel below by touching the desired program selection icon.

### "START"

This START button is used for starting cooking. By pressing the MENU button for choosing the desired cooking program and then press START for program start. After cooking is finished, it will automatically enter to keep warm mode. Pressing the CANCEL button, to cancel the working program and then you can select a new program.

**When the program was on , the black round program display screen will show as below:**

White rice :  Flashing lamp	Quick cook rice :  Flashing lamp
Brown rice : Timer count down	Congee: Timer count down
Soup : Timer count down	Quinoa : Timer count down
White rice :  Flashing lamp	Yogurt : Timer count down
Reheat : Timer count down	

### "MENU"

This function allows you to select one of the 9 default Program cooking in display screen.

Each press you switch one program. Press MENU button and select desired program. Indicator light of selected program is on. Press START button to begin cooking.

### Adjustable Cooking time setting

There are default cooking time for the 9 programs, customers can adjust the cooking time according to the different ingredients and favors by the following steps:

1. Press MENU button to select your desired program, the default cooking time will be show on the display screen.
2. Then press HOUR or MIN button to increase the cooking time.
3. Cooking time will be back to default cooking time when it increases to the maximum.

### "HOUR"&"MIN"

The "HOUR" means Hour is for adjusting cooking time and preset time in hour unit. The "MIN" means Minute, for adjusting cooking time and preset time in minute unit.

Press MENU button and select desired program. Indicator light of selected program is on.

Press HOUR and MIN button to set the timer, and press START button to begin cooking.

### "PRESET"

The function is used to set the delayed start on desired program. This feature is available in all modes of cooking, except for "yogurt". Choose a cooking program by a "MENU" button, press the "PRESET" button, its indication light is on. The screen will flashily display the default delay



start time. Use the "HOUR" and "MIN" button to set the desired period of time for the delayed start function.

### **"CANCEL/KEEP WARM"**

With this function, you can keep food warming or cancel all working mode. When cooking finished, the unit will switch to keep warm mode automatically. During cooking long press "CANCEL/KEEP WARM" button for 3 seconds to cancel the program; press again "KEEP WARM" button once will be activated 24-Hour automatic keep Warm function after cooking program finished and its indicator light will be on. Do not use the KEEP WARM mode more than 4 hours. Or else taste may be spoiled.

### **PROGRAM SETTING**

Program	Rice to water ratio	Quantity	Default cooking time	Adjustable cooking time	Preset time
White Rice	1:1	1 -3cup	No show	Non adjustable	1hr-24hrs
Quick cook rice	1:1	1 -3cup	No show	Non adjustable	Non adjustable
Brown rice	1:1	1 -3cup	1hr	1hr-2hrs	1hr-24hrs
Congee	1:6	1cup	1hr	1hr-1hr30mins	1hr-24hrs
Soup	/	/	1hr30mins	1hr30mins-6hrs	1hr-24hrs
Quinoa	1:1	1-3cup	30mins	30mins-1hr30mins	1hr-24hrs
Steam	/	/	30mins	30mins-1hr30mins	1hr-24hrs
Yogurt	/	Milk:500 ml lactobacillus:0.5g	8hrs	Non adjustable	Non adjustable
Reheat	/	/	30mins	30mins-1hr	1hr-24hrs

- The above actual cooking time will be cooked thoroughly in 360° induction heating intelligent control and vary according to the surrounding temperature, humidity, actual amount of water, atmospheric pressure, it is for reference only.
- Please further adjust the cooking time and the volume of water for different brand of rice by your own preference.

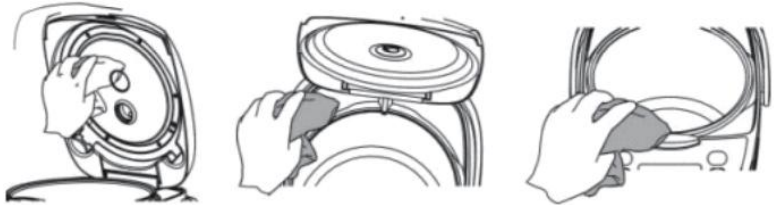
### **CLEANING AND MAINTENANCE**

1. Disconnect the power cord from Housing . Then unplug the power cord connector from the unit.
2. Cooled down the machine and inner pot before cleaning.
3. Holding the removable lid with right thumb and forefinger as picture below, remove it lightly, clean the lid and inner pot separately with mild detergent and soft cloth. Do not

use hard material e.g. scrubber, scouring pad/ball for cleaning.



4. Clean the housing with damp cloth and dry thoroughly. Do not immerse the cooker into water or allow liquid to flow into the interior of the product or inside the base when cleaning.



5. Follow the cleaning procedures stated in this manual to well maintain the unit before storage. Make sure the whole unit is dry before you store it. Store the unit in cool dry place and avoid exposure to direct sunlight.
6. After cooking with curry, and other soy sauce should clean inner pot immediately to avoid inner pot coloring.
7. After using for a while, the pot may vary in color due to the contact with water and detergent and colored ingredients. This is normal, and rice cooker can safely be operated on.

### **PRODUCT SPECIFICATION**

Model No: GRC6BK

Rated voltage: 220V-240V ; 50H-60Hz

Rated power: 350W

Capacity (approx.) :0.6 Litre

Product dimension (H x W x D) : 214 x 223 x 203mm

\*The final product specification may be varied according to different material.

## **安全預防措施**

**當使用本產品時，請遵循以下基本的安全指引：**

**使用本產品前，請先閱讀本說明書：**

1. 本產品只供家居使用，不可戶外使用。
2. 從插座拔下插頭前，先把本產品轉為“關閉”模式。請勿拉扯電源線方式拔下插頭，必須用手抓緊插頭，之後才從插座除下，不可直接強行從插座拉下插頭。
3. 請勿讓電源線接觸高溫表面。拆卸和清理前，必須讓產品完全冷卻。
4. 不適用本產品時，務必從電源插座拔出插頭。
5. 請勿用損壞的電源線或者在產品有任何損壞的情況下使用本產品。為了避免觸電，請勿拆卸和重新組裝。如有任何損壞，請先與客戶服務部聯絡，並親自攜帶本產品到本公司維修部處理。擅自修理/改裝或產品於非產品原本設計用途，本公司恕不提供保養。
6. 不可讓兒童單獨使用本產品。
7. 使用中或剛使用後，觸摸高溫金屬零件或者高溫部分可能會被燒傷。
8. 切勿在產品工作時接觸到本產品的內部。
9. 本產品不能連接其他定時器或者遙控器。
10. 電源線不可以懸掛在桌子邊緣或者接觸高溫表面，以防破壞電源線。
11. 本產品不可以放置高溫的物體旁邊使用。
12. 使用時，應將產品放置於平穩及兒童不易觸及的地方，以防兒童拉扯電源線或者觸碰產品而導致產品翻倒導致燙傷或者損壞產品。
13. 內鍋洗淨後，請用乾抹布放入電飯煲內。
14. 內鍋的底部應避免碰撞，以防變形，且不可以用其他容器代替內鍋，內鍋與發熱盤之間應保持清潔乾淨，以免損壞。
15. 內鍋可以用清水清洗，請勿用水直接沖洗電飯煲或者將本產品浸入水中/其他液體中，以免發生火災，漏電或危害人身安全。
16. 當產品運作時，請勿移動本產品。
17. 煮食時，請勿用布或者任何異物遮擋煲蓋排氣口，否則容易發生故障。
18. 煮食時，請勿觸碰提手以外的部分，切勿接近蒸汽孔以防燙傷。
19. 請用塑料或者木質飯勺。請勿使用金屬飯勺，以免損壞內鍋表面塗層。
20. 烹煮過程中，開關按鍵自動跳起後，請勿強行按下按鍵，以免損壞電飯煲。
21. 本產品不適用於身體殘障，感官或者精神能力不足，或缺乏經驗和知識的人（包括兒童），除非他們已經接受監督或者指導。
22. 第一次使用本產品時，可能會產生輕微的異味或者白煙，只要把本產品放在通風處，異味及白煙將會消散。

## **特別聲明：**

1. 為了避免電路負荷過重，請勿在同一電路上操作另一件電器。
2. 如果延長線有必要使用，應使用 13 安培的電線，額定電流比此產品較小的電線可能會引起過熱及短路。
3. 請保留此說明書以備將來作參考。
4. 請勿讓兒童或未經培訓的人員在不經監督的情況下使用本產品。
5. 請勿將本產品，電源線或者插頭浸入任何液體中。否則可能會導致觸電或者火災。
6. 當產品無需使用時，請斷開插頭與電源的鏈接。

7. 請勿在產品運作時用濕手觸碰。
8. 請勿將產品暴露在戶外（雨或者陽光底下）。
9. 當插頭插入插座並開啟後，請確保有合格資格的人員監督下方可使用本產品。
10. 在使用本產品前，請移除所有的包裝物料。
11. 拆除包裝後，檢查是否有損壞。
12. 所有包裝物料，如塑料袋，發泡膠，膠帶等。都應該放在兒童接觸不到的地方，因為此物料不正當使用會引起兒童窒息，甚至死亡。
13. 只能使用本產品提供在產品及包裝內的配件，否則可能對用戶構成危險，並有可能損壞產品。
14. 在使用本產品前，請檢查產品銘牌上標明的電源，電壓是否符合。銘牌貼在產品背面，如有任何疑問，請向公司客戶服務部查詢以及尋求協助。
15. 請勿讓電源線接觸鋒利的邊緣或者高溫表面。
16. 本產品不是玩具，不可用在人及動物身上，否則會被燙傷。
17. 本產品不可用在不穩定的地點或者燃燒的物體上使用，否則容易引起火災或被燒傷。
18. 零件及配件不包括在保養範圍內，如客人需要更換零件及配件，必須另行本公司購買。零件不一定有存貨，有可能需等待若干時間才能更換。
19. 本產品只限於家居使用，不可作任何商業用途。
20. 如須產品維修，客人必須自行清潔乾淨及殺死所有的昆蟲。否則本公司須收取額外之清潔及滅蟲費用。
21. 第一次使用本次產品時，由於該絕緣材料可能有氣味或有煙，此乃正常現象並會於短時間消退。
22. 請勿將本機插座前放於易燃物品及煮食爐附件，不要在地毯及塑膠等不耐煩的物體表面（或其部分）使用本產品，本產品四周應與易燃物品保持至少 1.5 米距離，於本產品上方不要放置容易受蒸汽影響的物品。
23. 請勿用濕手觸碰及拔電源線，否則可能導致短路或者觸電危險。
24. 產品使用時會產生大量蒸汽從上蒸汽閥噴出，不要靠近或者觸碰氣閥，不要覆蓋蒸汽閥。
25. 使用時，請勿讓本機離開您的視線範圍之外，避免發生意外。
26. 請勿使用鋒利或者俱有磨蝕性用具放進內鍋翻轉米飯及食物，此做法會損傷內鍋的不粘塗層。
27. 請勿與其他電器共用一個插座，把插頭直接插入插座及請避免使用分插座，以防因為過熱而引起火災。
28. 將插頭拔出時必須手握插頭，禁止用拉電源線的方式拔插頭。
29. 使用前，請抹乾煮食鍋的外面部分，以確保更加有效的使用本產品。
30. 應依說明書指示烹飪，不應放入超過內鍋建議容量的食物，以防食物溢出。
31. 本產品需配合原廠的內鍋使用，不可與其他煮食器皿共用。不應該直接把內鍋放在煮食爐具上加熱。
32. 本產品並不傾向提供給體弱、反應遲鈍、有精神障礙的人士，或者缺乏相關經驗和嘗試（包括兒童）使用，除非有具備專業資格人士/成年人指導陪同下使用。
33. 為了防止漏電和其他事故，不使用本產品及清潔前必須關掉本產品。
34. 請定期檢查產品的電源線，若電源線損壞，必須由本公司售後服務部或者合資格的電器技工更換，避免發生危險。
35. 請勿使用非本產品附送的配件，以免發生危險以及造成傷害。
36. 產品上貼有“警告”標籤，使用本產品前請閱讀有關事項。
37. 控制台為輕觸式設計，若錯誤啟動會造成高溫操作，請立刻拔出插頭。

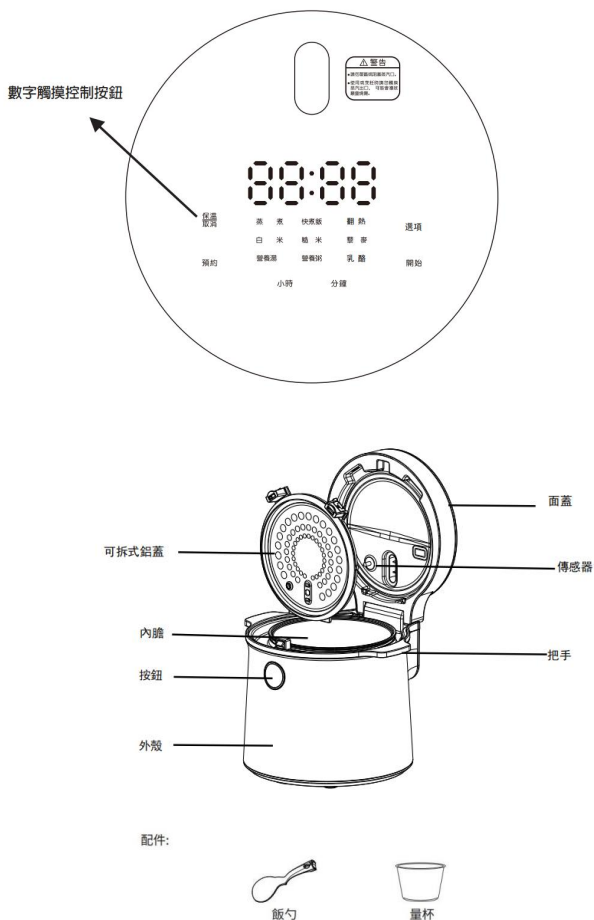
38. 不可把任何物品/食物放在煲內作存放用途。

39. 此產品不是玩具，請勿讓家中兒童玩弄。

40. 不可弄濕鍋內發熱盤。

若無注水下誤開導致乾燒，如有內膽，當頂部溫度超過 105°C 或者底部溫度超過 165°C 時會出現高溫保護，“電飯煲不加熱”自動跳保溫。

## 產品各部分描述



### 使用者指南：

1. 移除所有包裝材料和促銷標籤。
2. 確保電源為 220-240V； 50Hz-60Hz。
3. 將設備插入牆上的電源插座，然後聽到嘟嘟聲，控制台上顯示“—”指示燈，設備現在可以使用了。
4. 徹底清洗塑膠配件。
5. 從電鍋中取出內鍋，用溫肥皂水清洗。放入鍋中之前，請徹底沖洗並乾燥。
6. 用濕布擦拭身體。

**注意：**在清潔之前和清潔過程中，不得將裝置連接到電源插座。 確保電源線已拔下。

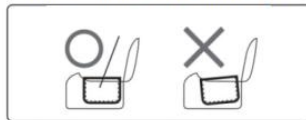
### 步驟如下：

1. 閱讀說明並按照提示進行操作。
2. 使用前請將所有包裝材料取出。
3. 按下鍋蓋釋放按鈕打開炊具。
4. 確保內鍋與加熱器或託盤之間沒有物體。
5. 將內鍋放入鍋中，確保內鍋安裝正確。

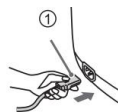
請使用乾淨及柔軟的抹布  
拭擦內鍋的外部及邊緣



請於發熱盤之上正確地放進內鍋



6. 遠離牆壁，不要將裝置放在易燃資料、電源插座和爐灶附近。
7. 準備好食材。請不要把鍋倒得太滿。
8. 首先將連接器插入外殼上的電器插座。（圖 1）



9. 將電源插頭連接到電源上。（圖 2）

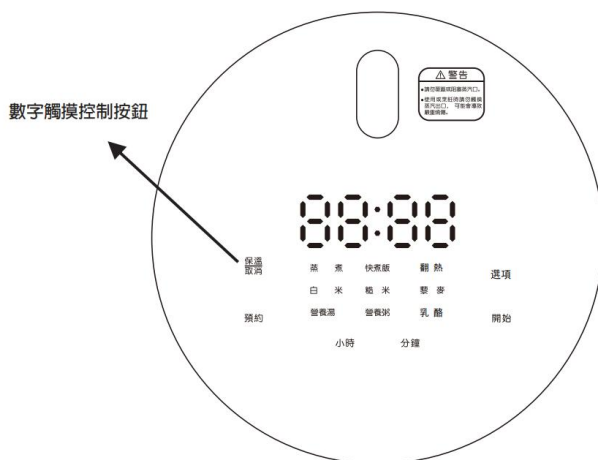


10. 選擇下面“程式選擇和設定”部分下的程式。
11. 按下“開始”按鈕，開始烹飪操作。

### 重要提示:

1. 使用後，必須用溫和的洗滌劑清洗內鍋，並用自來水徹底沖洗。
2. 正確使用量杯，不要在鍋內沖洗米飯或者食材，否則可能會損壞不粘塗層。
3. 確保含量不超過鍋內的指示水位線。
4. 保持鍋內乾燥並慢慢轉動內鍋，使其與外殼完全貼合。

### 功能顯示:



### 選擇功能

請通過觸摸所需的程序選擇圖標，在下面的觸控式螢幕控制台上選擇功能。

#### “啟動”

此 START（啟動）按鈕用於啟動烹飪。按下 MENU 按鈕選擇所需的烹飪程序，然後按下 START 啟動程序。烹飪完成後，它將自動進入保溫模式。按下 CANCEL 按鈕，取消工作，然後可以選擇新程序。

### 當程序打開時，顯示幕將顯示如下：

白米	燈閃爍	快煮飯	燈閃爍
糙米	倒計時	粥	倒計時
湯	倒計時	藜麥	倒計時
蒸	燈閃爍	乳酪	倒計時
翻熱	倒計時		

## “菜單”

此功能允許您在上面的顯示屏中選擇 9 個內置烹飪之一。每按一次即可切換一個程序。按 MENU 按鈕並選擇所需的程序。所選程序的指示燈亮起。按“開始”按鈕開始烹飪。可調節烹飪時間設置。

9 個程序都有默認的烹飪時間，顧客可以根據不同的食材和喜好調整烹飪時間，步驟如下：

1. 按 MENU 按鈕選擇所需的程序，顯示屏上將顯示默認的烹飪時間。
2. 然後按小時或分鐘按鈕增加烹飪時間。
3. 烹飪時間增加到最大時將恢復默認烹飪時間。

## “小時”和“分鐘”

“HOUR”表示小時，以小時為單位調整烹飪時間和預設時間，“MIN”表示分鐘，以分鐘為單位調整烹飪時間和預設時間。按 MENU 按鈕並選擇所需的程序。所選程序的指示燈亮起。按“小時”和“分鐘”按鈕設置計時器，然後按“開始”按鈕開始烹飪。

## “預設”

該功能用於設置所需程序的延遲啟動。此功能適用於除“乳酪”之外的所有烹飪模式，通過“MENU”按鈕選擇烹飪程序，按“PRESET”按鈕，其指示燈亮。屏幕會閃爍顯示默認的延遲開始時間。使用“HOUR”和“MIN”按鈕設置延遲啟動功能所需的時間段。

## “取消/保溫”

通過此功能，您可以對食物進行保溫或取消所有工作模式。烹飪完成後，機器將自動切換到保溫模式。

烹飪過程中，長按“取消/保持溫暖”按鈕 3 秒可取消該程序；再次按下“保溫”按鈕一次，烹飪程序結束後，24 小時自動保溫功能將啟動，其指示燈將亮起。使用保溫模式的時間不要超過 4 小時。否則味道可能會變質。

## 程序

程序	米水比例	份量	默認時間	可調節時間	預約時間
白米	1:1	1 -3 杯	無顯示	不可調節	1 小時-24 小時
快煮飯	1:1	1 -3 杯	無顯示	不可調節	不可預約
糙米	1:1	1 -3 杯	1 小時	1 小時-2 小時	1 小時-24 小時
粥	1:6	1 杯	1 小時	1 小時-1 小時 30 分鐘	1 小時-24 小時
湯	/	/	1 小時 30 分鐘	1 小時 30 分鐘 -6 小時	1 小時-24 小時
藜麥	1:1	1 -3 杯	30 分鐘	30 分鐘-1 小時 30 分鐘	1 小時-24 小時
蒸	/	/	30 分鐘	30 分鐘-1 小時 30 分鐘	1 小時-24 小時



乳酪	/	牛奶: 50 毫升 乳酸菌: 0.5 克	8 小時	不可調節	不可預約
翻熱	/	/	30 分鐘	30 分鐘-1 小時	1 小時-24 小時

\*以上實際烹飪時間將在 360° 感應加熱智能控制中工作，並根據周圍溫度、濕度、實際水量、氣壓而變化，僅供參考。

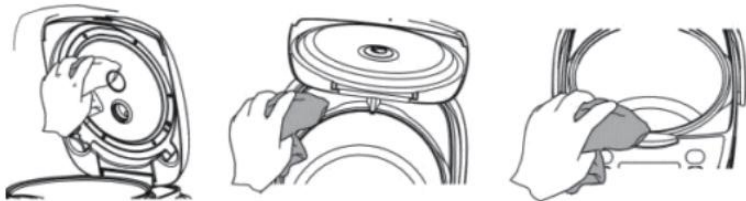
請根據您自己的喜好進一步調整不同品牌米的煮飯時間和水量。

### 清潔和維修

1. 從外殼電源上拔下電源線。然後從設備上拔下電源線連接器。
2. 清洗前將機器和內鍋冷卻。
3. 如下圖所示，用右手拇指和食指握住可拆卸的蓋子，將其取下，用溫和的清潔劑和軟布分別輕輕清潔蓋子和內鍋。請勿使用硬質材料（例如刷子、百潔布/球）進行清潔。



4. 用濕布清潔外殼並徹底乾燥。清潔時請勿將炊具浸入水中或讓液體流入產品內部或底座內部。



5. 存放前請按照本手冊所述的清潔程序做好設備的維護工作，存放前確保整個設備乾燥。將設備存放在陰涼乾燥處，避免陽光直射。
6. 使用咖喱，其他有色醬油烹飪後，請立即清洗內膽以免內膽上色。
7. 使用一段時間後，鍋可能會因接觸水、洗滌劑顏色或有色食材而變色，這是正常現象，可以安全地操作電飯煲。

**產品規格：**

型號：GRC6BK

額定電壓：220V-240V； 50Hz-60Hz

額定功率：350 瓦

容量（大約）：0.6 公升

產品尺寸（高 x 闊 x 深）（大約）：214 x 223 x 203 毫米

\* 最終產品規格可能會根據不同批次材料而有所不同

## 請記錄下列產品資料

型號 Model No.:

機身編號 Serial No.:

經銷商名稱 Dealer:

購買日期 Date of Purchase:

單據編號 Invoice No.:

本產品不斷改進中，如功能有所更改，恕不另行通知  
如有疑問，請與客戶服務中心聯絡。不便之處，敬請原諒。

The product specifications may be changed without prior notice.  
Please contact customer service for details if necessary.

說明書內容以英文版本為準

If there is any inconsistency or ambiguity  
between the English version and the Chinese version,  
the English version shall prevail.

保養登記  
Warranty Registration



於網上登記新產品保養  
Register your product online  
[www.dchtoolbox.com](http://www.dchtoolbox.com)

小電維修服務 - 自攜點  
Repair Service - Collection Points



客戶服務中心 DCH ToolBox Customer Service Centre  
香港九龍灣啟祥道20號大昌行集團大廈4樓  
4/F, DCH Building, 20 Kai Cheung Road, Kowloon Bay, Hong Kong

客戶服務熱線 Customer Service Hotline: (852) 8210 8210  
電郵地址 E-mail: [8210service@gilman-group.com](mailto:8210service@gilman-group.com)  
網址 Website: [www.gilman-group.com](http://www.gilman-group.com)