

geminipro
ITALY

1.2升IH磁應焱釜電飯煲

1.2L IH RICE COOKER

**MODEL NO./ 型號 GRC12B
1100W**

Important Safety Instructions

When using this appliance, basic precautions should always be followed, including the following:

Read all instructions before use.

1. This product is only for home use, not for outdoor.
2. Remove the product from the outlet to the "off " mode before unplugging the plug from the outlet. Do not use the way to pull the power cord to unplug the plug, should be hold the plug and remove it from the socket. Do not pull down the plug directly from the socket by pressing the rewinding system directly. Remove the plug from the socket by hand and then retract the wire.
3. Do not allow the wires to touch the hot surface. Before removing and cleaning, the product must be completely cooled.
4. When not in use, be sure to unplug the power plug from the power outlet.
5. Do not operate this product with any damage to the power cord. In order to avoid electric shock, do not disassemble and reassemble. If any damage, please carry it to our maintenance center. Unauthorized repair / modification or product for non-product design purposes, warranty will not provide.
6. Do not allow children to use this product separately.
7. Touch hot metal parts or steam may burn.
8. Don't touch the inside of the product while it is in operation.
9. This product cannot be connected to a timer or remote control.
10. The power cord should not be hung from the edge of the table or in contact with hot surfaces. In case of damage to the power cord.
11. This product should not be placed next to objects with high temperature.
12. When using, place the product in a stable place that is difficult for children to reach, in case the child pulls the power cord or touches the product, causing the product to turn over to the burned person or damage the product.
13. After the inner pot is washed, wipe it with a dry cloth to put it into the rice cooker.
14. The bottom of the inner pot should avoid collision to prevent deformation, and other containers should not be used instead of the inner pot. The inner pot and the heating plate should be kept clean to avoid damage.
15. The inner pot can be cleaned with water. Do not rinse the rice cooker directly with water, or immerse the product in water/other liquids to avoid fire, electric leakage or life safety.
16. When the product is working, it cannot be moved.
17. When cooking, do not cover the venting opening with a cloth or any foreign matter, otherwise it will be prone to malfunction.
18. When cooking the rice, do not touch the product, excluding the handle. Do not approach the steam vent to prevent burns.
19. Please use plastic or wooden rice spoon; do not use metal rice spoon to avoid damage to the inner pot surface coating.
20. During the cooking process, after the switch button automatically jumps, do not force the button to be pressed to avoid damaging the rice cooker.
21. This appliance is not to be used by persons (including children) who have reduce physical, sensory or metal capabilities, or lack of experience and knowledge, unless they have been given supervision or instruction.
22. When first time to use this appliance, a slightly smell and white smoke may be emitted. It is normal status. Please ensure sufficient ventilation, those smell and white smoke will disappear quickly.

Special statement:

1. To avoid overloading the circuit, do not operate the other on the same circuit.
2. If the extension cord is necessary, use a 13 amp cable. A smaller current than this product may cause overheating and short circuit.
3. Please keep this manual for future reference.
4. Do not allow children or untrained personnel to use the product without supervision.
5. Do not immerse the product, power cord, or plug in any liquid. Doing so may cause electric shock or fire. To clean the product, follow the cleaning section on the instructions.
6. When the product is not in use, disconnect the plug from the power supply.
7. Do not touch the product with wet hands.
8. Do not expose the product to outdoor (rain or under the sun).
9. After inserting the plug into the socket and opening it, make sure that the qualified personnel supervise the use of the product.
10. Before using this product, remove all packaging materials.
11. After unpacking, check for damage and there are no missing parts.
12. All packaging materials, such as plastic bags, poly foam, tape, etc. should be placed in places where children are not exposed, because improper use of these materials will lead to child suffocation, and even death.
13. Use only the parts provided in the product and in the packaging, otherwise it may pose a hazard to the user and may damage the product.
14. Before using the product, please check the product rating label on the power, voltage is consistent. The rating label is attached to the back of the product. If you have any questions, please contact our customer service department for assistance.
15. Do not allow the power cord to touch a sharp edge or hot surface, during operation.
16. This product is not a toy, cannot be used directly into the people and animals, otherwise it will be burned.
17. This product cannot be used in unstable locations or burning objects, otherwise it is likely to cause a fire or burn.
18. Parts are not included in the warranty, if you need to be replaced, must be purchased with my company. Parts are not necessarily available, it may take some time to replace.
19. This product is for home use only and should not be used for any commercial purpose.
20. Please must clean the product and kill all the insects before sent to our repair center, otherwise our company will charge extra cost for cleaning and pest control.
21. You may notice an odour & gas using the appliance for the first time, use to the insulation material. This is harmless and will subside quickly.
22. Do not use this product near an open flame, on or near the surface of heat-resistant objects such as carpets and plastics. Keep combustible materials away at least 1.5m from the cooker. Do not place the items that are susceptible to steam on top of this product.
23. Do not connect and pull the power cord with wet hands, otherwise it may cause a short circuit or electric shock.
24. When the cooker is in use, hot vapor will emit from top of the vent. Please do not get close or touch the steaming valve when cooking. Do not cover the steaming valve at all times during cooking.
25. Do not leave the unit while it is in operation.
26. Do not use sharp or abrasive items in contact with the inner pot as this will damage the non-stick coating.
27. Do not use extension power cord with other electrical appliance, use wall socket only.
28. Always grasp the plug to disconnect the unit from the power source. Do not pull the cord.
29. Ensure cooking with care, the pot and its outer surface are dried with clean dry cloth before cooking.

30. Please follow the instruction of cooking stated in this manual. Please ensure the content does not exceed the maximum water line engraved inside the cooking pot.
31. This inner pot must be used with the cooker. Please do not use the inner pot with other cooking device. The inner pot should not be used direct on stove.
32. This product is not intended to use by persons (including children) with weak physical condition, slow reaction, mental retardation, lack of experience and common sense, unless they are under supervision or instruction by the person who is responsible for their safety.
33. To avoid danger of electric shock, unplug from outlet when not in use and before cleaning.
34. Regularly check the power cord of this product. If the power cord is damaged, it must be replaced by our after-sales service department or qualified electrician to avoid danger.
35. Do not use accessories that are not supplied with this unit to avoid danger and injury.
36. There is a "warm reminder" message on the product, please pay attention to it before use.
37. Switch the cooker off immediately when the digital touch control panel was touched by mistake, or it will cause dry cooking.
38. Do not put any item or food into the inner pot for storage purpose.
39. This product is not a toy, please do not let children to play with it.
40. Do not wet the heating tray of the main machine.
41. If switch on the cooker with no filled water in the inner pot by mistake, there will be high temperature protection and it will not work. when the top temperature exceeds 105°C or bottom temperature exceeds 165°C, the cooker will switch to keep warm mode automatically. If no inner pot in the cooker, there is an indicator " E0" shown on display screen.



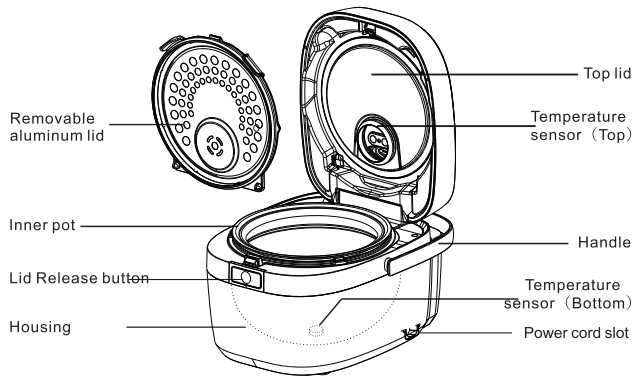
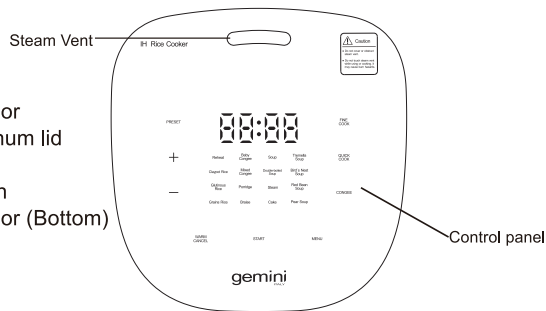
Caution

- Do not cover or obstruct steam vent.
- Do not touch steam vent while using or cooking. It may cause burn hazards.

Operating Instructions:

Parts :

1. Top lid
2. Temperature Sensor
3. Removable Aluminum lid
4. Inner Pot
5. Lid Release Button
6. Temperature Sensor (Bottom)
7. Handle
8. Housing
9. Power Cord Slot



Accessories:



Instructions

1. If the product picture is inconsistent with the actual product, please refer to the actual product.
2. Before working on the rice cooker, please check the inner pot and check if the steam valve is in place to avoid malfunction.
3. There is a slight hum or hum in the machine, which is the normal sound of the machine. Please feel free to use it.
4. Do not cook with hot water, so as not to affect the temperature judgment of the thermostat, affecting the cooking effect.
5. Please refer to the inner pot water level scale to add rice and water ratio, and adjust it according to personal taste to avoid possible. Causes the rice to be caught and the rice is too bad.
6. If the machine malfunctions, please turn off the power and pull the plug out of the socket. Do not continue to use or repair it yourself. Please contact our after-sales service personnel.

7. This product is for home use only and is not applicable to other locations.
8. To ensure the effect of cooking food, please clean the inner cover and steam valve regularly.
9. Specifications described in this manual are subject to change without notice.

The steps are as follow:

1. Read the instructions and follow the prompts.
2. Please remove all the packing materials before use.
3. Open the cooker by pressing the lid release button.
4. Make sure there are no objects between the inner pot and the heating tray.
5. Place the inner pot into the cooker, make sure that the inner pot is properly installed.

wipe clean the outer
and edge of inner pot
with clean soft cloth



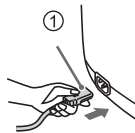
heating tray



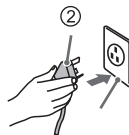
put in the inner pot properly



6. Keep it away from the wall, do not put the unit near flammable materials, power socket and cooking stove.
7. Prepare the ingredients. Please do not overfill the cooking pot.
8. Plug in the connector to the appliance inlet on the housing first. (Fig.1)



Connect the cord plug to the power source. (Fig.2)



10. Press the "MENU" button to select cooking program.
11. Press the "START" button to start the cooking operation.
12. When not in use, be sure to unplug the power plug from the power outlet.

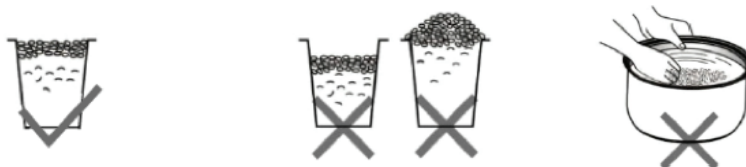
Technical Specification

Model	Voltage	Power	Frequency	Capacity
GRC12B	220~240V~	1100W	50~60Hz	1.2L

Cleaning and Maintenance

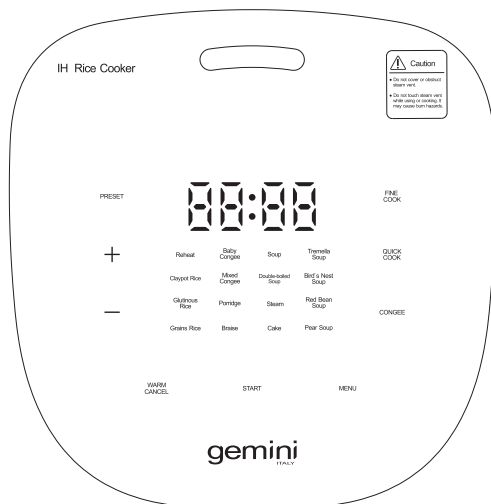
To avoid electric shock, you must turn off the power before cleaning the machine, unplug the power cord, and wait for it to cool before proceeding.

1. After cooking rice, it is easy to have odor residue. Please be sure to clean it on the same day.
2. Do not use corrosive potions and hard objects to clean the inside and outside of the product. (e.g. banana water, gasoline, decontamination powder, hard brush, etc.)
3. Use a soft, absorbent, soft cloth to wipe the lid, body, etc. to keep the rice cooker clean. (Note: Please do not wipe the system, plug and power cord with a wet cloth.)
4. It is strictly forbidden to enter the water inside the appliance. Please do not clean the appliance part of the product into the water.
5. Do not use a dishwasher or a dishwasher to clean it to avoid the risk of deformation or explosion.
6. Do not disassemble or modify the product yourself, otherwise the one-year free maintenance service will be cancelled immediately.
7. Use the measuring cup correctly and do not rinse rice or ingredients inside the inner pot, it may cause damage on the non-stick coating.



8. Please make sure that the rice level is added to the inner pot does not exceed the max indicator of the inner pot, in avoid overflow from the inner pot.
9. Wipe dry the outer shell of the inner pot, put the inner pot into the rice cooker carefully, and adjust the position slowly.

Control Panel



Function Introduction

Program Selection

Please select the functions on the touch screen control panel below by touching the desired program selection icon.

How To Start

This "START" button is used for starting cooking. By pressing the "MENU" button for choosing the desired cooking program and then press "START" for program start. After cooking is finished, it will automatically enter to keep warm mode. Pressing the "CANCEL" button for 2 seconds, to cancel the working program and select a new program.

※When the program was on, the display screen timer will count down.

Menu

This function allows you to select one of the 19 Auto-Program cooking in above display screen. Each press you switch on program. Press "START" button, to begin cooking.

Adjustable cooking time setting

There are default cooking time for the 19 programs, customers can adjust the cooking time according to the different ingredients and favors by the following steps:

1. Press "MENU" button to select your desired program, the default cooking time will be shown on the display screen. (Program settings on menu table for your reference.)
2. Then press "+" or "-" button to increase the cooking time. (Program settings on menu table for your reference.)
3. Cooking time will be back to default cooking time when it increases to the maximum.

“+” and “-”

The “+” and “-” is for adjusting cooking time and preset time .

Press “MENU” button and select desired program. Indicator light of selected program is turned on. Press “+” and “-” button to set the timer, and press “START” button to begin cooking.

Preset

The function is used to set the delayed start on desired program.

This feature is available for all modes of cooking, except for “QUICK COOK”, “REHEAT”, “BABY CONGEE” and “CAKE”.

Choose a cooking program by a “MENU” button, press the “PRESET” button, its indication light is on. The screen will flashily display the default delay start time. Use the “+” and “-” button to set the desired period of time for the preset function.

Note: The preset time refers to the time when cooking complete.

Warm/Cancel

With this function, you can keep food warming or cancel all working menu.

When cooking finished, the unit will switch to keep warm mode automatically.

During cooking, long press “WARM/CANCEL” button for 2 seconds to cancel the program; press again, “WARM” button once will be activated. 24-Hour automatic keep warm function after cooking program finished and its indicator light will be ON. Do not use the “WARM” mode more than 4 hours, or else taste may be spoiled.

This cooker has power-off memory in cooking mode. During cooking, with power-off less than 2 hours, the cooker will continue unfinished cooking program when resuming power.

Program / Menu Setting

Program	Default cooking time	Adjustable cooking time	Preset timer on
Fine Cook	45min	Not adjustable	1hr-24hr preset
Quick Cook	30min	Not adjustable	Not adjustable
Congee	1hr30min	40min-4hr	1hr-24hr preset
Reheat	30min	10min-1hr	Not adjustable
Claypot Rice	1hr	1hr-2hr	1hr-24hr preset
Glutinous Rice	1hr	Not adjustable	1hr-24hr preset
Grains Rice	1hr30min	Not adjustable	1hr-24hr preset
Baby Congee	1hr30min	Not adjustable	Not adjustable
Mixed Congee	1hr30min	1hr-4hr	1hr-24hr preset
Porridge	1hr	1hr-4hr	1hr-24hr preset
Braise	45min	30min-1hr30min	1hr-24hr preset
Soup	1hr30min	1hr-4hr	1hr-24hr preset
Double-boiled Soup	3hr	2hr-4hr	1hr-24hr preset
Steam	30min	5min-1hr	1hr-24hr preset
Cake	45min	Not adjustable	Not adjustable
Tremella Soup	2hr	1hr-4hr	1hr-24hr preset
Bird's Nest Soup	45min	30min-1hr	1hr-24hr preset
Red Bean Soup	3hr	2hr-4hr	1hr-24hr preset
Pear Soup	30min	30min-1hr	1hr-24hr preset

※ Press “+” or “-” key to adjust the time. “+” and “-” for 5 minutes adjustment.

※ The above actual cooking time will be cooked thoroughly in 360° induction heating intelligent control and vary according to the surrounding temperature, humidity, actual amount of water, atmospheric pressure, it is only the time for reference.

※ Please further adjust the cooking time and the volume of water for different brand of rice by your own preference.

Suggested Cook Guide

Fine Cook	1 to 5 cups of rice (rice : water=1:1)
Quick Cook	1 to 5 cups of rice (rice : water=1:1)
Congee	Put water and rice according to the "Congee" water mark.
Reheat	Put rice into the inner pot, then put 80ml water, Adjust the water volume according to the weight of rice.
Claypot Rice	3 cups of rice (rice : water=1:1), open the lid and put ingredients (less than 250g) when buzzer sounds (about 40mins after cooking). Place food inside the pot about 15 mins after cooking if ingredients are thick and need longer time for cooking.
Glutinous Rice	1 to 5 cups of rice (rice : water=1:1)
Grains Rice	1 to 5 cups of rice (rice : water=1:1)
Baby Congee	Put water and rice according to the "Congee" water mark.
Mixed Congee	Put water and rice according to the "Congee" water mark.
Porridge	Put water and rice according to the "Congee" water mark.
Braise	Ingredients 1000g, water 50ml
Soup	Ingredients 500g, water 1000ml
Double-boiled Soup	Ingredients 500g, water 1000ml
Steam	Put water into the inner pot to "1" water mark, then put the steamer with eggs, corns, etc, into the pot.
Cake	4 eggs, 100g cake flour, 75g white sugar, 10g corn oil or olive oil.
Tremella Soup	Ingredients proper amount, maximum water to "Congee" water mark "1 cup"
Bird's Nest Soup	Ingredients proper amount, maximum water to "Congee" water mark "1 cup"
Red Bean Soup	Ingredients proper amount, maximum water to "Congee" water mark "1 cup"
Pear Soup	Ingredients proper amount, maximum water to "Congee" water mark "1 cup"

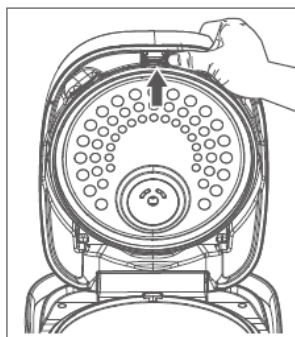
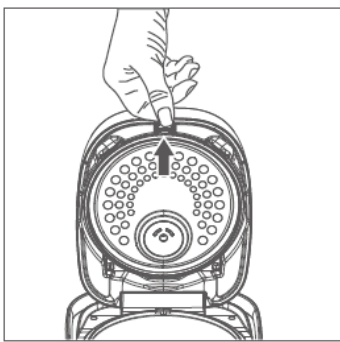
※ Press "+" or "-" key to adjust the time. "+" and "-" for 5 minutes adjustment.

※ The above actual cooking time will be cooked thoroughly in 360° induction heating intelligent control and vary according to the surrounding temperature, humidity, actual amount of water, atmospheric pressure, it is only the time for reference.

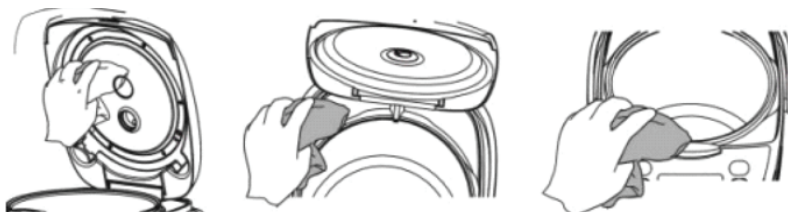
※ Please further adjust the cooking time and the volume of water for different brand of rice by your own preference.

Rice cooker case and top lid:

1. Wipe with a wrung, damp cloth.
2. If the metal inside the upper cover is not cleaned in time, the dirt will adhere to the metal surface and it is difficult to wash off. It is recommended to clean and scrub after each use.
3. It may be a normal phenomenon that the metal surface may be slightly discolored or streaking after a long period of time, and it will not affect the use.
4. Press the clap with left hand to loosen it. After the clap is releasing, remove the aluminum cover from bottom. Remove and clean the lid and cooking pot separately with mild detergent and soft cloth. Do not use hard material e.g. scrubber, scouring pad/ball for cleaning.



5. Clean the housing with damp cloth and dry thoroughly. Do not immerse the cooker in the water or allow liquid to flow into the interior of the product or inside the base when cleaning.



6. After using the product, please dry the water in the rice cooker sink.

Cleaning steps please according the manual

Make sure the whole unit is dry before you store it. Store the unit in cool dry place and avoid exposure to direct sunlight.

Trouble Shooting

Trouble shooting

Fault situation	Reason	Solution
The indicator light is turned on but no heating	Circuit failure	Please contact customer service before returning to our service center for inspection/repair.
	Heating plate failure	Please contact customer service before returning to our service center for inspection/repair.
Rice is uncooked	Cook too much or too little	Adjust the amount of rice & water which should be within minimum and maximum level.
	Wrong proportion of rice & water	Adjust the ratio of rice & water.
	The inner tank is not put in place correctly	Turn the inner pot slightly.
	There is objects inside between the inner liner and the heating plate	Clean up objects, please do not rinse directly by water.
	Deformation of the inner pot	Please contact customer service before returning to our service center for inspection/repair.
	Circuit failure	Please contact customer service before returning to our service center for inspection/repair.
	Sensor failure	Please contact customer service before returning to our service center for inspection/repair.
Scorched rice (black at the bottom)	The inner pot is not put in the place correctly	Put inner pot correctly.
	Deformation of the inner bladder	Please contact customer service before returning to our service center for inspection/repair.
	Circuit failure	Please contact customer service before returning to our service center for inspection/repair.
	Sensor failure	Please contact customer service before returning to our service center for inspection/repair.
Overflow congee	Put too much rice or water to cook congee	Reduce amount of rice or water level.
	Not select "Congee/soup" function to cook	Select the "Congee/soup" function to cook.
Fault code E0	No inner pot	Put inner pot.
Fault code E1	Top sensor short circuit	Please contact customer service before returning to our service center for inspection/repair.
Fault code E2	Top sensor open circuit	Please contact customer service before returning to our service center for inspection/repair.
Fault code E3	Bottom sensor short circuit	Please contact customer service before returning to our service center for inspection/repair.
Fault code E4	Bottom sensor open circuit	Please contact customer service before returning to our service center for inspection/repair.
Fault code E5	Voltage too high	Use a proper Voltage
Fault code E6	Voltage too low	Use a proper Voltage
Fault code E7	IGBT's temperature exceed 105℃	Please contact customer service before returning to our service center for inspection/repair.

SMALL HOME APPLIANCES WARRANTY TERMS & CONDITIONS

MAIN PLAN LIMITED (hereinafter called "the Company") offers one year warranty service to the product (commencing from the date of purchase invoice by the authorized dealers). Services beyond the said warranty period will be charged according to the quotation from our Service Department.

1. Customer should follow the operating instruction in operating the product. The Company shall not be liable for any direct or indirect loss or damage to any person or property, howsoever caused arising from improper use, or any stoppage, breakdown or failure of the product.
2. The warranty service will not be offered if the model, serial number of the product or the invoice of the authorized dealers has been altered or effaced.
3. This warranty does not cover any damage or loss caused by man-made, misuse, neglect, unauthorized repair / modification or use of the product for any purpose other than the original designed.
4. This warranty service does not include any surface, cabinet, consumptive parts and accessories.
5. Customer should be responsible to carry the product to our Service Department for rendering of service and collect back the product at the same location after repaired. Any defective part which has been replaced should become the property of the Company.
6. All articles left unclaimed by the customer within 30 days after notification will be disposed of at our own discretion and the Company shall not be liable or responsible to the customer for such articles or for any loss or damage whatsoever in such event.
7. All terms stated are subject to change without notice. In case of dispute, the Company reserves the right for final judgment and decision.

PRODUCT SPECIFICATION

Model No: GRC12B

Rated voltage : 220V-240V 50[~] 60 Hz

Rated power: 1100W

Capacity (approx.) :1.2 Litre

Product size(H x W x D) (about): 210*249*315mm

* The final product specification may be varied according to a different a lot of material and actual input voltage power usage area

安全預防措施

當使用本產品時，請遵循以下的的基本的安全指引：

使用本產品前，請先閱讀本說明書：

1. 本產品只供家居使用，不可戶外使用。
2. 從插座拔下插頭前，先把本產品轉為“關閉”模式。請勿用拉扯電源線方式來拔下插頭，必須先用手抓緊插頭，之後才從插座除下，不可直接強行從插座拉下插頭。
3. 請勿讓電線接觸高溫表面。拆卸和清潔前，必須先讓產品完全冷卻。
4. 不使用本產品時，請務必從電源插座拔出插頭。
5. 請勿用損壞的電源線或在產品有任何損壞的情況下使用本產品。為避免觸電，請勿拆卸和重新組裝。如有任何損壞，請先與客戶服務部聯絡，並親自攜帶本產品到本公司維修部處理。擅自修理/改裝或產品用於非產品原本設計的用途，本公司恕不提供保養。
6. 不可讓兒童單獨使用本產品。
7. 使用中或剛使用後，觸摸高溫金屬零件或任何高溫部份可能會被燒傷。
8. 切勿在產品工作時接觸到本產品的內部。
9. 本產品不能連接其他定時器或遙控器。
10. 電源線不可懸掛在桌子邊緣或接觸高溫表面，以防破壞電源線。
11. 本產品不可放置於高溫的物體旁邊使用。
12. 使用時，應將產品放置於平穩及兒童不易觸及的地方，以防兒童拉扯電源線或觸碰產品而導致產品翻到導致燙傷或損壞產品。
13. 內鍋洗淨後，請用乾抹布擦乾淨才放入電飯煲內。
14. 內鍋的底部應避免碰撞，以防變形，且不可以其他容器代替內鍋，內鍋和發熱盤之間應保持清潔乾淨，以免損壞。
15. 內鍋可以用清水清潔。請勿用水直接沖洗電飯煲或將本產品浸入水中/其他液體中，以免發生火災、漏電或危害人生安全。
16. 倘產品運作時，請勿移動本產品。
17. 煮食時，請勿用布或任何異物遮擋煲蓋排氣口，否則容易發生故障。
18. 煮食時，請勿觸碰提手以外的部份，切勿接近蒸氣孔以防燙傷。
19. 請用塑膠或木質飯勺。請勿使用金屬飯勺，以免損壞內鍋表面塗層。
20. 烹煮過程中，開關按鍵自動跳起後，請勿強行按下按鍵，以免損壞電飯煲。
21. 本產品不適用於身體殘障、感官或精神能力不足，或缺乏經驗和知識的人（包括兒童），除非他們已接受監督或指導。
22. 第一次使用本產品時，可能會產生輕微的異味或白煙，只要把本產品放在通風處，異味及白煙將會消散。

特別聲明：

1. 為避免電路負荷過重，請勿在同一電路上操作另一件電器。
2. 如果延長線有必要使用，應使用13安培的電線。額定電流比此產品較小的電線可能引起過熱及短路。
3. 請保留此說明書以備將來作參考。
4. 請勿讓兒童或未經培訓的人員在不經監督的情況下使用本產品。
5. 請勿將本產品，電源線或插頭浸入任何液體中。否則可能導致觸電或火災。如要清潔此產品，請按照說明書上[清潔與保養]部份進行。

6. 當產品無需使用時，請斷開插頭與電源的連接。
7. 請勿用濕手觸摸本產品。
8. 請勿將產品暴露在戶外（雨或陽光底下）。
9. 當插頭插入插座並開啟後，請確保有合資格的人員監督下方可使用本產品。
10. 在使用本產品前，請移除所有包裝物料。
11. 拆開包裝後，檢查是否有損壞，及有否零件。
12. 所有包裝物料，如塑膠袋、發泡膠、膠帶等。都應放在兒童接觸不到的地方，因為此等物料不正當使用會引至兒童窒息，甚至死亡。
13. 只能使用本公司提供在產品及包裝內的配件，否則可能對用戶構成危險，並有可能損壞產品。
14. 在使用產品前，請檢查產品銘牌上標明的電源，電壓是否符合。銘牌貼在產品背面。如有任何疑問，請向本公司客戶服務部查詢及尋求協助。
15. 請勿讓電源線接觸鋒利的邊緣或高溫表面。
16. 本產品不是玩具，不可用在人及動物身上，否則會被燙傷。
17. 本產品不可用在不穩定的地點或燃燒的物體上使用，否則容易引起火災或被燒傷。
18. 零件及配件不包括在保養範圍內，如客人需更換零件及配件，必須另行本公司購買。零件不一定有存貨，有可能需等待若干時間才能更換。
19. 本產品只限於家居使用，不可作任何商業用途。
20. 如須產品維修，客人必須自行清潔乾淨及殺死所有之昆蟲。否則本公司須收取額外之清潔及滅蟲費用。
21. 第一次使用本產品時，由於該絕緣材料可能有氣味或有煙，此乃正常情況並會於短時間消退。
22. 請勿將本機插座前放於易燃物品及煮食爐附近，不要在地毯及塑膠等不耐熱的物體表面（或其附近）使用本產品，本產品四周應與易燃物品保持最少1.5米距離，於本產品上方不要放置容易受蒸氣影響的物品。
23. 請勿用濕手鏈接及拔電源線，否則可能導致短路或觸電等危險。
24. 產品使用時會產生大量蒸氣從上蓋蒸氣閥噴出，不要靠近或觸碰蒸氣閥，不要覆蓋蒸氣閥。
25. 使用時，請勿讓本機離開你的視線範圍之外，以免發生意外。
26. 請勿使用鋒利或具有磨蝕性用具放進內鍋翻轉米飯及食物，此做法會損壞內鍋之不沾塗層。
27. 請勿與其他電器共用一個插座、把插頭直接插入插座及請避免使用分插座，以防止因過熱而引起火災。
28. 將插頭拔出時必須手握插頭，禁止用拉電源線的方式拔插頭。
29. 使用前，請抹乾煮食鍋之外面部分，以確保更有效地使用本產品。
30. 應依說明書的指示烹調，不應放入超過內鍋建議容量的食物，以防食物溢出。
31. 本產品需配合原廠的內鍋使用，不可與其他煮食器皿共用。不應直接把內鍋放在煮食爐具上加熱。
32. 本產品並不傾向提供給體能弱、反應遲緩、有精神障礙的人士或缺乏相關經驗和常識者（包括兒童）使用，除非有具備專業資格人士/成年人指導陪同下使用。
33. 為防止漏電及其他事故，不使用本產品及清潔前必須關掉本產品。
34. 請定期檢查本產品的電源線，若電源線損壞，必須由本公司售後服務部或合資格的電器技工更換，以免發生危險。
35. 請勿使用非本產品附送的配件，以免發生危險及造成傷害。
36. 產品上貼有“警告”標籤，使用本產品前請閱讀有關事項。
37. 控制台為輕觸式設計，若錯誤啟動會造成高溫操作，請立刻拔出插頭。
38. 不可把任何物品/食物放在煲內作存放用途。
39. 此產品不是玩具，勿讓家中兒童玩弄。
40. 不可弄濕鍋內發熱盤。
41. 若無注水下誤開導致乾燒，如有內膽，當頂部溫度超過105℃，或底部溫度超過165℃時會出現高溫保護，電飯煲不加熱，自動跳保溫。如無內膽，面版顯示屏會顯示E0。



注意

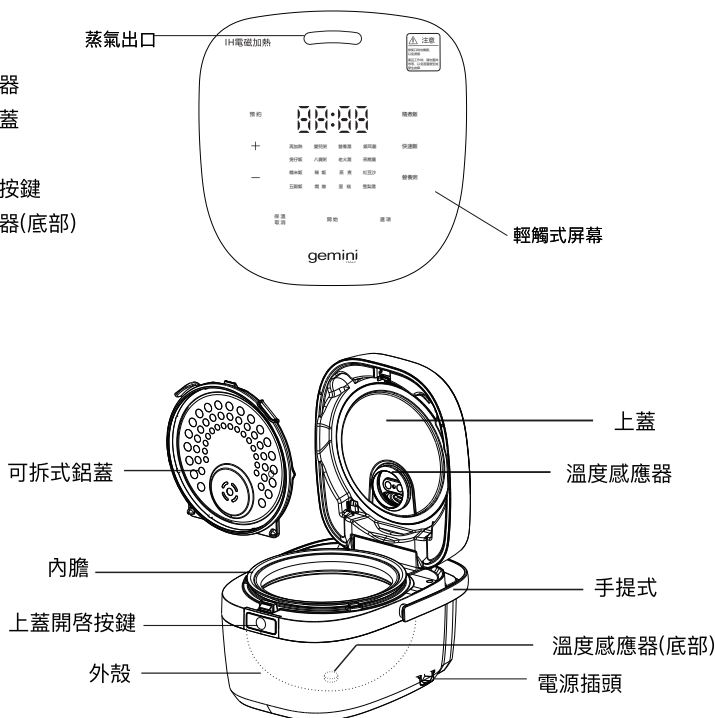
排氣口時勿觸摸，
以免燙傷

產品工作時，請勿蓋抹
布等，以免面蓋變形或
發生故障

產品各部份描述

主機：

1. 上蓋
2. 溫度感應器
3. 可拆式鋁蓋
4. 內膽
5. 上蓋開啓按鈕
6. 溫度感應器(底部)
7. 手提式
8. 外殼
9. 電源插頭



產品使用

1. 如產品圖片與實物不一致，請以產品實物為準。
2. 電飯煲運作前，請先檢查內鍋和蒸氣閥是否安裝到位，以免引起故障。
3. 使用本產品時，會聽到輕微的滴答聲或嘶嘶聲，此乃屬正常情況，請放心使用。
4. 請勿用熱水烹煮，以免影響溫度控制器的溫度判斷，影響烹飪效果。
5. 請參考內鍋水位刻度加入米及水比例，並結合個人口感作出適當調整，以免可能引起米飯太生和米飯太爛的現象。
6. 若本產品發生故障，請先將電源關閉，並將插頭從插座拔出，切勿繼續使用或自行維修，請與本公司售後維修人員聯絡。
7. 本產品僅作為家庭使用，不適用於其他場所。
8. 為保證煮食效果，請定期清理內蓋及蒸氣閥。
9. 本說明書中描述規格如有變更，恕不另行通知。

使用步驟說明

1. 請詳細閱讀說明書，並按照指示使用本產品。
2. 使用期間，請清理所有包裝物料。
3. 按下開蓋按鈕打開上蓋。
4. 確保內鍋與發熱盤之間沒有異物。
5. 確保內鍋放入飯煲內及內鍋已正確安裝，見下圖。

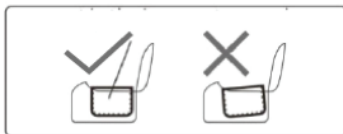
請使用乾淨及柔軟的抹布拭
擦內鍋的外部及邊緣



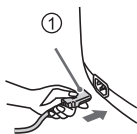
發熱盤



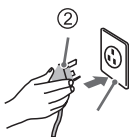
請於發熱盤之上正確地放進內鍋



6. 請遠離牆身電插位，切勿將本產品放於易燃物品及煮食爐附近。
7. 準備所需食材，請勿烹煮超出鍋內容量的食物。
8. 請先把電源線接頭連接入飯煲（圖一）。



9. 把電源線插頭接到牆身主電源上（圖二）。



10. 請按“選項”鍵選擇煮食模式說明，烹調時間可按需要而調整。
11. 確認模式後，按“開始”鍵。
12. 不使用電飯煲時，必須將插頭拔離主電源。

警告：

1. 欲使本產品完全關閉電源，必須先將插頭拔離主電源，再將電線插頭從飯煲插座拔出。
2. 在煮食過程中，請注意從上蓋蒸氣出口排出的高溫蒸氣，以免燙傷。

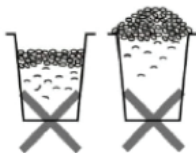
技術參數

型號	電壓	功率	頻率	容量
GRC12B	220-240V~	1100W	50-60Hz	1.2 升

清潔與保養

為免發生觸電，清洗本產品前必須先關閉電源，將電源插頭拔下，待其冷卻後再清洗。

1. 完成烹煮後飯煲容易留有異味，請務必於當日將它們清潔乾淨。
2. 請勿使用帶有腐蝕性的藥水及硬物對本產品的內外部進行清潔（如香蕉水、汽油、去污粉、硬質刷等）。
3. 請使用乾淨並且吸水性較好的軟抹布擦拭煲蓋、煲體等部位以保持飯煲清潔(注意：請不要用濕的軟抹布擦拭按掣、插頭及電源線)。
4. 電器部份內部嚴禁進水，請勿將本產品的電器部份放進水中清洗。
5. 請勿使用洗碗機或烘碗機進行清洗，以免造成變形或爆炸等危險。
6. 請勿自行拆卸及改裝本產品，否則一年免費保養服務立即被取消。
7. 正確使用量杯，請勿在內鍋內直接洗米及食物，以免損毀內鍋塗層。



8. 確保放入內鍋的食物不超出最高水位線，以免滾湯流出鍋外。
9. 抹乾內鍋的外殼，把鍋小心地放進電飯煲內，慢慢轉動調校位置。

控制台



操作說明

選擇程式：

輕觸面板上的“選項”鍵，選擇所需的程式。

如何開始：

按“開始”鍵用於烹煮啟動鍵。

按“選項”鍵選擇需要的煮食程式。

按“開始”鍵啟動程式。

完成煮食後，飯煲會自動進入保溫模式。可長按“取消”鍵2秒，放棄之前的程式，然後選擇新程式。

※ 顯示屏顯示倒數計時，即該煮食程式已開始運作。

面板控制

如何選項：

按“選項”鍵選擇顯示屏中的19個自動煮食程式。

繼續按“選項”鍵選擇所需煮食程式後，該程式的指示燈會亮起。

按“開始”鍵啟動程式。

如何預設煮食時間：

所有煮食程式均有預先設定的煮食時間，你可以就不同的菜單及口味，按以下步驟調整煮食時間的設定。

1. 按“選項”鍵選定烹煮程式後，控制屏會顯示程式預設的煮食時間（可參考菜單設定表內容）。
2. 再按“+”或“-”鍵調校煮食時間，請參考下表有關設定時間的資料。
3. 當時間增加至最高值後，設定時間會回到最低設定的時間。

如何調整“+”及“-”：

輕按“+”和“-”進行調節煮食時間及預約時間的調節。按“選項”鍵，選擇所需的程式，相應的程式菜單指示燈亮起，按“+”及“-”鍵設定煮食時間，完成設定後按“開始”鍵，開始煮食運作。

如何使用預約功能：

此按鍵用於設定延遲煮食時間。除“快速飯”、“再加熱”、“嬰兒粥”及“蛋糕”外，此按鍵適用於其他所有程式。

選定程式後，按“預約”鍵，螢幕會閃爍顯示煮食時間，按“+”及“-”鍵進行時間設定，按“開始”鍵，螢幕時間停止閃爍，只有該程式燈亮起和開始倒數，即表示預約程式完成，稍後會按時進行煮食。

注意：設置的預約時間是煮食完成的時間。

如何使用保溫/取消的功能：

此按鍵用於切換至保溫程式或取消所有進行中的程式。煮食完成後，飯煲會自動進入保溫程式，此按鍵燈亮起。煮食過程中，按“保溫/取消”鍵停止進行中的程式；再次按此鍵時，飯煲會進入保溫程式。本產品最長保溫時間為24小時，請勿過長時間地保溫食物，建議不要使用保溫功能超過4小時，以免影響食物的口感。

本產品具有烹煮程式下斷電記憶功能。煮食過程中，當斷電2個小時內再次通電時，飯煲會繼續之前未完成的程式。

選項設定

菜單	預設煮食時間	可調節時間	預約時間
精煮飯	45分鐘	不可調節	1-24小時預約
快速飯	30分鐘	不可調節	不可調節
營養粥	1小時30分鐘	40分鐘-4小時	1-24小時預約
再加熱	30分鐘	10分鐘-1小時	不可調節
煲仔飯	1小時	1-2小時	1-24小時預約
糯米飯	1小時	不可調節	1-24小時預約
五穀飯	1小時30分鐘	不可調節	1-24小時預約
嬰兒粥	1小時30分鐘	不可調節	不可調節
八寶粥	1小時30分鐘	1-4小時	1-24小時預約
稀飯	1小時	1-4小時	1-24小時預約
燜燉	45分鐘	30分鐘-1小時30分鐘	1-24小時預約
營養湯	1小時30分鐘	1-4小時	1-24小時預約
老火湯	3小時	2-4小時	1-24小時預約
蒸煮	30分鐘	5分鐘-1小時	1-24小時預約
蛋糕	45分鐘	不可調節	不可調節
雪耳羹	2小時	1-4小時	1-24小時預約
燕窩羹	45分鐘	30分鐘-1小時	1-24小時預約
紅豆沙	3小時	2-4小時	1-24小時預約
雪梨湯	30分鐘	30分鐘-1小時	1-24小時預約

※ 按“+”及“-”鍵調節預約時間。按“+”和“-”鍵以5分鐘為設定單位。

※ 以上煮食時間是透過360度全方位電磁加熱智能控制煮食及會因應周圍環境的溫度、濕度、實際注水量及大氣壓力的不同而有差異，煮食時間只供參考。

※ 使用不同牌子的米煮出來的飯會有所不同效果，請自行調校合適個人口味的煮食時間和水的份量。

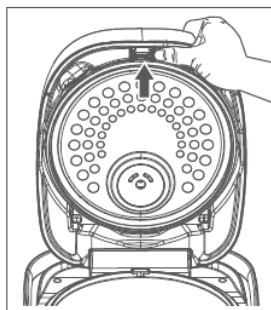
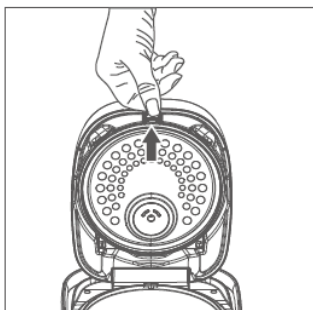
菜單建議烹煮方法

精煮飯	可煮1-5杯米，米和水的比例1:1
快速飯	可煮1-5杯米，米和水的比例1:1
營養粥	米和水的份量按“Congee”水位線刻度
再加熱	把約50%的飯放入內膽，並加入半杯水（約80毫升），飯和水的比例按實際份量酌量增減
煲仔飯	3杯米，米和水的比例1：1，約程式啟動後的40分鐘會聽到蜂鳴聲，放進不超過250克的其他食材。如食材比較大或難以煮熟，可在煮飯15分鐘後放進食材
糯米飯	可煮1-5杯米，米和水的比例1:1
五穀飯	可煮1-5杯米，米和水的比例1:1
嬰兒粥	米和水的份量按“Congee”水位線刻度
八寶粥	米和水的份量按“Congee”水位線刻度
稀飯	米和水的份量按“Congee”水位線刻度
燜燉	食材1000克，水50毫升
營養湯	食材500克，水1000毫升
老火湯	食材500克，水1000毫升
蒸煮	加水至內膽刻度線“1”，把雞蛋、粟米等食材放進內膽內
蛋糕	4隻雞蛋，100克蛋糕粉，75克白砂糖，10克食用油（粟米油、橄欖油等）
雪耳羹	適量食材，最多可加水至“Congee”水位線1杯
燕窩羹	適量食材，最多可加水至“Congee”水位線1杯
紅豆沙	適量食材，最多可加水至“Congee”水位線1杯
雪梨湯	適量食材，最多可加水至“Congee”水位線1杯

※ 本產品提供的量杯之1量杯容量等於180毫升。

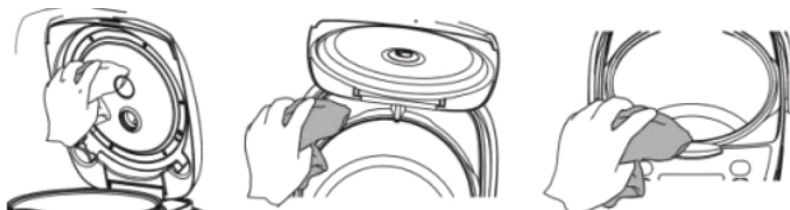
電飯煲外殼和上蓋：

1. 用扭乾的濕軟布擦拭。
2. 如不及時清潔上蓋內側金屬的污垢，污垢將黏附到金屬面，屆時便很難清洗。建議每次使用後，須徹底洗淨。
3. 長期使用後，金屬面可能會出現變色或斑紋，此屬正常現象，並不影響使用。
4. 從電飯煲取出內鍋及可拆的鋁蓋(左手向下輕輕壓住卡扣，鬆開卡扣後，從上面取下可拆鋁蓋即可)，用溫和清潔劑及軟布抹乾，不要用硬布抹擦內鍋，以免損害不粘塗層。



5. 用濕布抹淨電飯煲的外殼。

每次使用產品後，請用乾布抹乾電飯煲內部水槽的積水，清潔步驟如說明書所示抹乾才可存儲於乾燥的地方和防止陽光直接照射。



注意：請用海綿等柔軟的物品和廚用清潔劑清洗飯勺和量杯。

故障及排除方法

問題	原因	解決方案
指示燈亮 不加熱	電路故障	與公司服務點聯繫進行維修
	發熱盤故障	與公司服務點聯繫進行維修
飯不熟	煮的量過多或過少	調整米水的量，應在最小和最大限量值內
	米水比例不對	調整米與水的比例
	內膽未放好，懸空	把內膽輕輕轉動，使接觸良好
	在內膽和發熱盤之間有異物	清理異物，但切勿用水直接沖洗
	內膽變形	與本公司售後人員聯繫，購買新的內膽
	電路故障	與公司服務點聯繫進行維修
	傳感器故障	與公司服務點聯繫進行維修
焦飯（底部黑色）	內膽未放好，懸空	把內膽輕輕轉動，使接觸良好
	內膽變形	與本公司售後人員聯繫，購買新的內膽
	電路故障	與公司服務點聯繫進行維修
	傳感器故障	與公司服務點聯繫進行維修
煮粥大量溢出	超量煮粥	減量至要求用量
	用非煮粥功能煮粥	選擇“粥/湯”功能煮
故障代碼E0	沒有內膽	放入內膽
故障代碼E1	頂部傳感器短路	與公司服務點聯繫進行維修
故障代碼E2	頂部傳感器開路	與公司服務點聯繫進行維修
故障代碼E3	底傳感器短路	與公司服務點聯繫進行維修
故障代碼E4	底傳感器開路	與公司服務點聯繫進行維修
故障代碼E5	電壓過高	使用正確電壓
故障代碼E6	電壓過低	使用正確電壓
故障代碼E7	IGBT过热 (IGBT溫度超過105度)	與公司服務點聯繫進行維修

小家電產品保修條款

敏寶有限公司（“本公司”）提供一年保修服務（由有效商戶發票上的購買日期起計算），保修期以後，客戶須按照維修部之修理報價支付一切費用。

- (一) 客戶應按照產品使用說明書之指引使用產品，本公司對於任何因產品不適當使用或任何產品之故障，損壞或停頓而引致任何人士或財產上直接或間接損失及破壞概不負責。
- (二) 客戶不可擅自刪改產品型號，機身編號或商戶發票內容。如發現者本公司將不向客戶提供保修服務。
- (三) 由於人為損壞、錯誤使用，疏忽，擅自修理 / 改裝或產品用於非產品原本設計之用途，保修服務恕不提供。
- (四) 本公司提供之保修服務不包括產品表面、機身、損耗性零件及配件。
- (五) 客戶需自行將產品送往本公司之維修部，並於修妥後，於同一地點取回。經更換後之任何損壞零件，將歸本公司所有。
- (六) 所有交到維修部之物品，在本公司發出通知取回後30天內仍不領回，本公司將有權作出處理，由此所引致之任何損失，本公司概不負責。
- (七) 保修條款如有任何更改，恕不另行通知。如有任何爭議，本公司保留最終決定權。

產品規格

型號 GRC12B

額定電壓 220-240 伏特 50⁻ 60赫茲

額定功率 1100瓦

容量（約） 1.2升

產品尺寸（高x闊x深）（約） 210*249*315毫米

* 相關產品的規格，可能會因配件批次或實際使用地區的電壓差異有所不同

請記錄下列產品資料

型號 Model No.:

機身編號 Serial No.:

經銷商名稱 Dealer:

購買日期 Date of Purchase:

單據編號 Invoice No.:

本產品不斷改進中，如功能有所更改，恕不另行通知
如有疑問，請與客戶服務中心聯絡。不便之處，敬請原諒。

The product specifications may be changed without prior notice.
Please contact customer service for details if necessary.

說明書內容以英文版本為準

If there is any inconsistency or ambiguity
between the English version and the Chinese version,
the English version shall prevail.



保養登記 Warranty Registration

於網上登記新產品保養 Register your product online
www.dchtoolbox.com



客戶服務中心 DCH ToolBox Customer Service Centre
香港九龍灣啟祥道20號大昌行集團大廈4樓
4/F, DCH Building, 20 Kai Cheung Road, Kowloon Bay, Hong Kong

客戶服務熱線 Customer Service Hotline: (852) 8210 8210
電郵地址 E-mail: 8210service@gilman-group.com
網址 Website: www.gilman-group.com

