

■ Installation

Safety precautions:

Do not install the cooker hood where there are many doors or windows in order to avoid affecting the exhaust efficiency of the hood caused by air flow.

Install the cooker hood right above the hob. The recommended distance between the hob and the lower edge of the cooker hood is minimum 650mm and maximum 750mm.

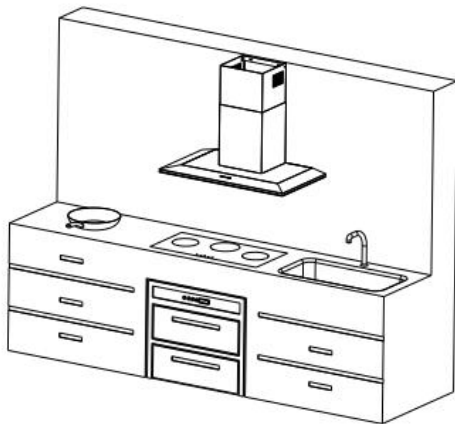
In order to get the optimum performance, do not elongate the exhaust pipe too long, and try to make the bend of exhaust pipe less. Ensure the connection is airtight.

After hanging the unit on the wall, ensure the hood is level and vertical.

The air outlet must not be connected to chimney flues or combustion gas ducts.

The air outlet must under no circumstances be connected to ventilation ducts for room in which fuel-burning appliances are installed.

Installation diagram



■ Electrical Connection

Before completing any connection, make sure the house voltage corresponds with the voltage indicated on the label affixed inside the hood.

Only a licensed professional may connect and install appliances. Damage caused by improper installation is not covered under warranty.

● **Appliance fitted with plug**

Connect it to a socket which conforms with current regulations. If you intend to connect it directly to the electric mains, remove the plug and fit an approved bipolar switch with a minimum contact opening of not less than 3mm.

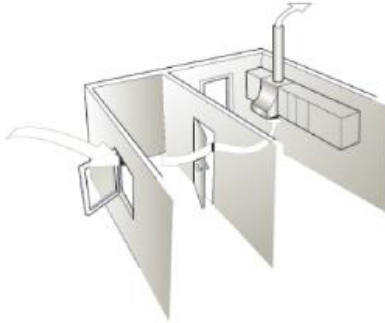
● **Appliance without plug**

Fit an approved plug or a bipolar switch with a minimum contact opening of no less than 3mm.

Direct connection installations must be handled by licensed professionals.

Brandt Asia Pte Ltd is not liable for damages caused by improper handling and installation of the appliance.

3. Try to open the Windows when used the cooker hood so air can flow.



Mounting the hood body

- Before attaching the hood body, tighten the two screws **Vr** located on the hood body mounting points.
- Hook the hood body onto the support screws.
- Fully tighten the support screws.
- Adjust screws **Vr** to level the hood body.

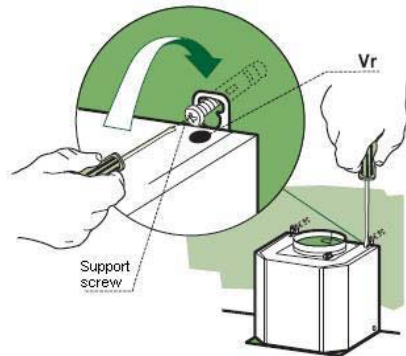
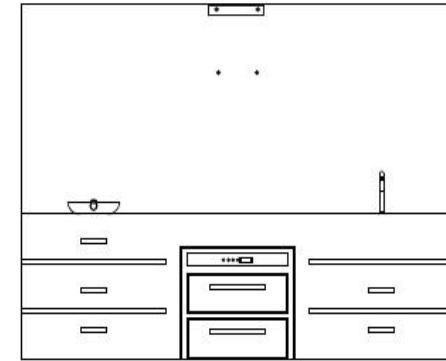


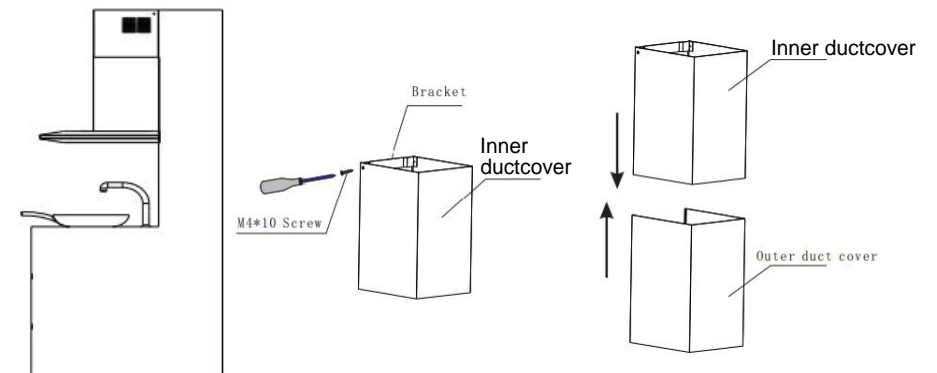
Fig.1

DUCTING MODE

1. Wall drilling and bracket fixing: Secure the sides of the brackets using 4 screws (ST5X40) and screws wall plug (8x40) supplied.

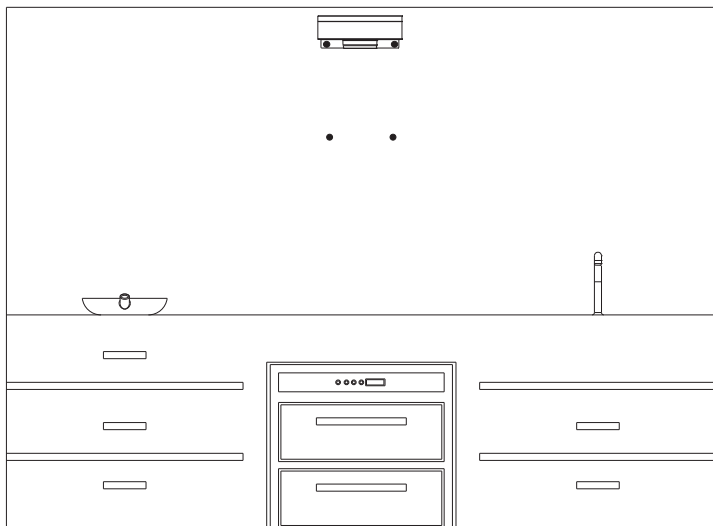


2. Fix the cooker hood and Upper & Bottom chimney in the wall with screws: Secure the sides of the brackets using the 2screws (M4X10) supplied.

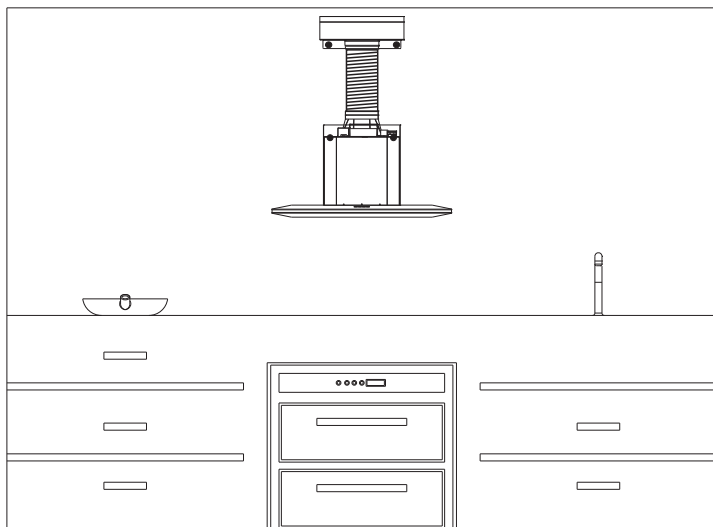


RECIRCULATING MODE

Wall drilling and metal air outlet fixing:secure the sides of the brackets using the 4 screws (ST5 X 40) and the wall plug screws (8x40) supplied).



2.Hook the hood body onto the support screws,adjust the height and then connect the aluminum foil flue. Pls refer to picture Fig.1.



3. Fix the upper chimney to the metal outlet with 2 screws (M4X 10) .

